

概要：

国立澎湖科技大学は台湾の離島である澎湖に立地している。澎湖は飛行機で台北から50分、台中からは約30分の距離である。海に囲まれている海島であり、学校から徒歩10分で海に着く。沖縄と似た環境で、海洋環境が豊かであり。また、海洋専門の分校として設立された学校のため、現在も海洋関係の学部が有名である。



国立澎湖科技大学

National Penghu University of Science and Technology

留学情報：

語学条件：確認中

学生寮の情報：確認中

| | |
|-----------------|-----|
| 留学生向けの 中国語授業 | 確認中 |
| 英語で行う授業 | 有 |

詳細情報は資料ご参照ください。

National Penghu University of Science and Technology

PENGHU

INTERNATIONAL STUDENT PROGRAM
2022-2023



CONTENTS

01

Penghu


02

**National Penghu
University of
Science and
Technology**

03

Studying at NPU





Penghu or is an archipelago of 90 islands and islets in the southwest of the Taiwan Strait.

Penghu is steeped in history and culture, with magnificent ocean views and many other natural wonders.

PENGHU

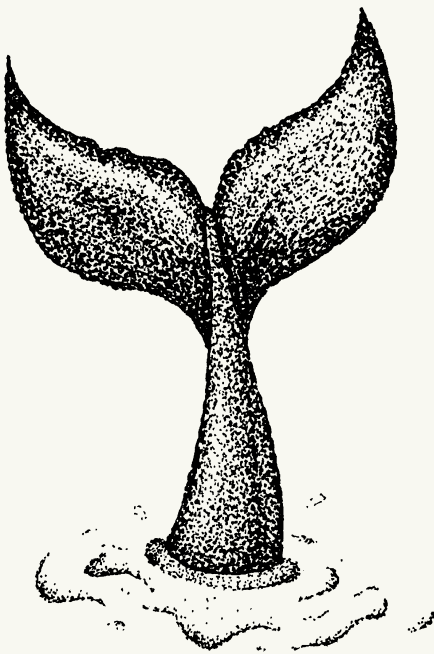
It is easy to get to Penghu from other parts of Taiwan. Regular flights serve the islands from Taipei, Taichung, Tainan, Chiayi, and Kaohsiung, and a regular charter flight service is offered from Kinmen. Visitors can also reach Penghu by boat, with service from Budai Harbor in Chiayi City, and the Port of Kaohsiung.





Penghu

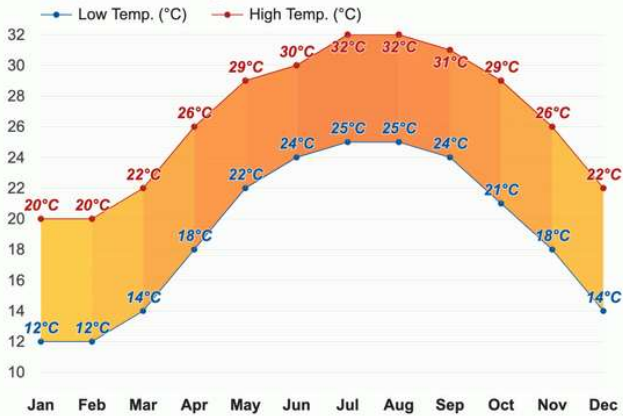
If you are looking to study in a a unique part of Taiwan, look no further! This gorgeous archipelago offers fantastic ocean views and is rich in history and culture. With inviting turquoise waters, white sandy beaches, and a unique culture, NPU provides the perfect balance between studying and exploring.



Whether you fancy windsurfing, scuba diving, snorkeling or swimming in the crystal clear waters, there are plenty of great beaches to choose from in Penghu. In fact, Penghu is home to the most beautiful beaches in Taiwan! Penghu has many remote islands that students can visit for a relaxing getaway on the weekends.

Climate

Temperature - Penghu, Taiwan



Penghu is roughly located on the tropic of cancer and has a subtropical climate. The average temperature of the year is 23°c ; ranging from 16°c in winter and 30°c in summer.



NATIONAL PENGHU UNIVERSITY OF SCIENCE AND TECHNOLOGY

National Penghu University of Science and Technology (NPU) is located in the beautiful Penghu Archipelago off the coast of Taiwan. We are a small university providing an excellent educational environment with outstanding undergraduate and graduate programs. Our goal is to culture all kinds of talents and experts in the fields of aquaculture, tourism and leisure, marine recreation, electrical engineering, marketing and logistics management, and many others.



NATIONAL PENGHU UNIVERSITY OF SCIENCE AND TECHNOLOGY

Students choose to come to Penghu and study at NPU for many reasons. Our tuition is among the lowest in Taiwan. Penghu is an international tourist destination known for its natural beauty. Our university is easily accessible by air or ship from Taiwan. Penghu provides excellent opportunities for internship in tourist and marine related sectors. Start your new adventure with us at NPU!

STUDYING AT NPU

OUR ACADEMIC PROGRAMS

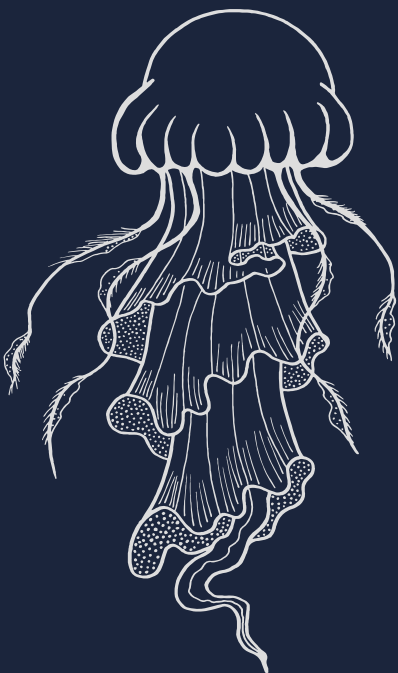


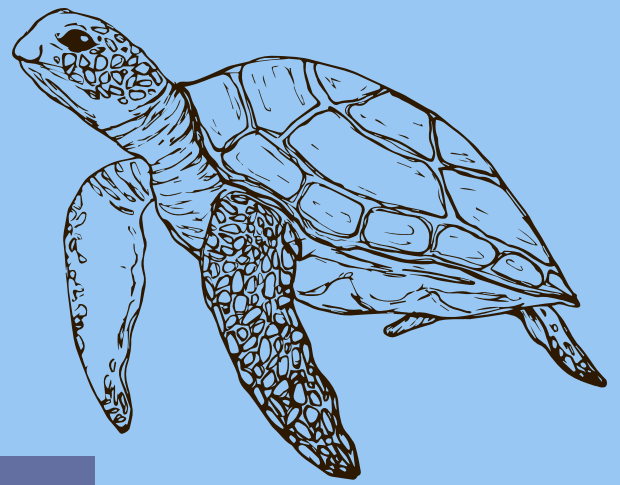
COLLEGE OF HUMANITIES AND MANAGEMENT

- Department of Marketing and Logistic Management
- Department of Shipping and Transportation Management
- Department of Information Management
- Department of Applied Foreign Languages

COLLEGE OF MARINE RESOURCES AND ENGINEERING

- Department of Food Science
- Department of Aquaculture
- Department of Electrical Engineering
- Department of Communication Engineering
- Department of Computer Science & Information Engineering





College of Tourism and Leisure



- Department of Tourism and Leisure
- Department of Hospitality Management
- Department of Marine Recreation



CONTACT US

Office of International Affairs

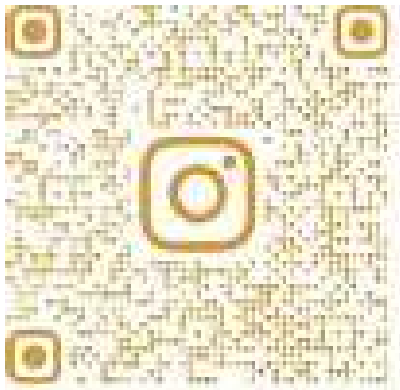
Tel: + 886-6-9264115 Ext. 1708 or 1723

Office Hours: 8:00 - 12:00, 13: 30-17:00

Monday to Friday

E-Mail: torulf@gms.npu.edu.tw

Website: npu.edu.tw



INSTAGRAM



FACEBOOK



NPU WEBSITE