

台北医学大学

Taipei Medical University



大学概要

1960年に創立し、台北市内に立地している大学である。40カ国約6,000人の留学生が在籍している。約45,000人の優秀な卒業生を生み出し、世界中の医療システムの改善に活躍している。

また、大学はTHE世界大学ランキングに101～200位にランクインし、「SDGs目標3.すべての人に健康と福祉を」ランキングで6位にランクインしている。

アクセス

○MRT市政府駅2番出口から
バスで台北医学大学駅で下車

- ・藍5番線
- ・市民小巴7番線
- ・266番線
- ・288番線
- ・台北医学大学病院
シャトルバス



学生寮情報

学生寮 あり

寄宿料

シングル	:	9,000 TWD/月
シングル (窓なし)	:	7,800 TWD/月
2人部屋 (大)	:	7,800 TWD/月
2人部屋 (小)	:	6,800 TWD/月



※詳細情報はホームページや資料ご参照ください。

語学に関する情報

・留学語学条件

英語の語学レベルがTOEFLiBT79

またはIELTS5.5以上

- ・英語での授業の有無 あり
- ・留学生向けの中国語授業 あり

Internationalization at TMU

Inbound Student & Exchange Programs

TMU-STEP

TMU Short-Term Exchange Program

Semester-long Study Program

- ▶ English-taught credit-bearing classes in Health Sciences
- ▶ Mandarin language courses & Taiwanese cultural activities for onsite students

TVRC

TMU Virtual Research Camp

(Join anytime, anywhere)

2 - 6 Months Research Mentorship

- ▶ Interactive virtual mentorship in Health Sciences

TEEP

Taiwan Experience Education Program

2 - 6 Months Internship

- ▶ Research-Oriented Learning Programs
- ▶ Merit-based subsidies

IIPP

International Internship Pilot Program

1 - 3 Months Internship

- ▶ Professional training at academic and research institutions in Taiwan
- ▶ Focusing on key scientific research fields in Taiwan

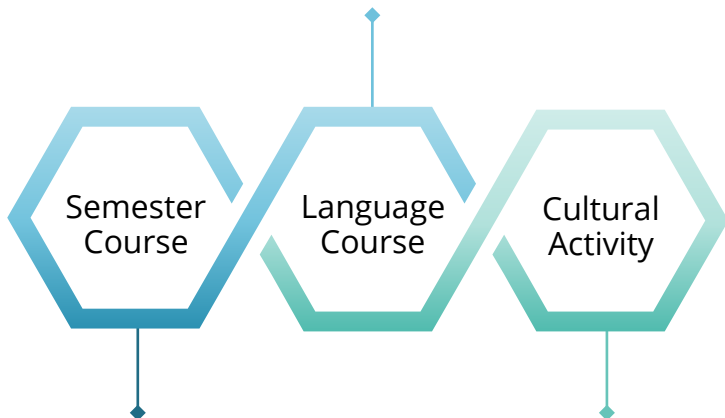
For more information on inbound programs, please visit:



TMU-Short Term Exchange Program

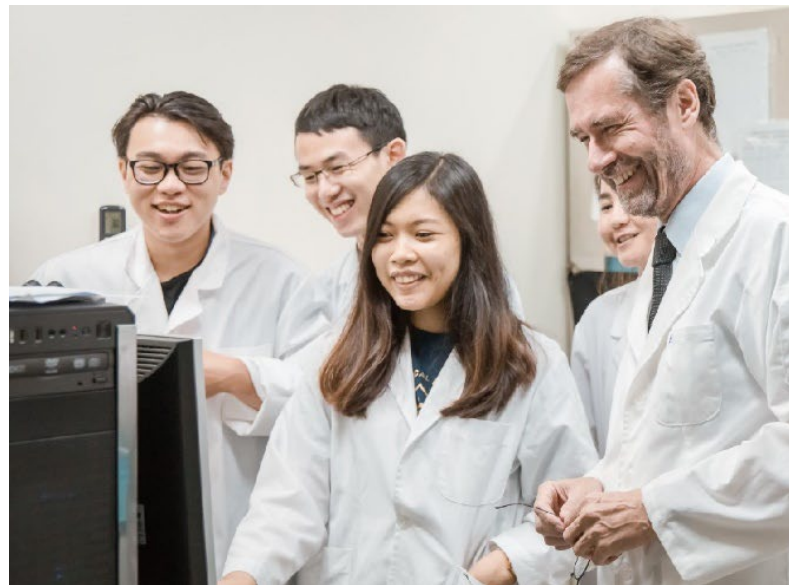
provides an opportunity for you to study at TMU for one or two semesters

For onsite participation, in addition to professional courses, students attending TMU-STEP courses may also sign up for fee-charging Chinese language courses when available



TMU-STEP consists of a wide variety of English-taught classes in Health Sciences, such as Medicine, Public Health, Pharmacy and Nutrition

There will also be opportunities to take part in numerous traditional and contemporary Taiwanese cultural activities



Website:



TMU Virtual Research Camp

A **research mentorship** through **distance learning** to foster research capability, innovative thinking, global awareness, and problem-solving skill sets to **develop young talents**.

- ▶ Receive **world-class research mentorship** from TMU faculty
- ▶ Build your **international research network** and reference
- ▶ Obtain **certificate** for program completion

Website:



Research topic related online courses

Virtual Research Mentorship

TMU's core facilities

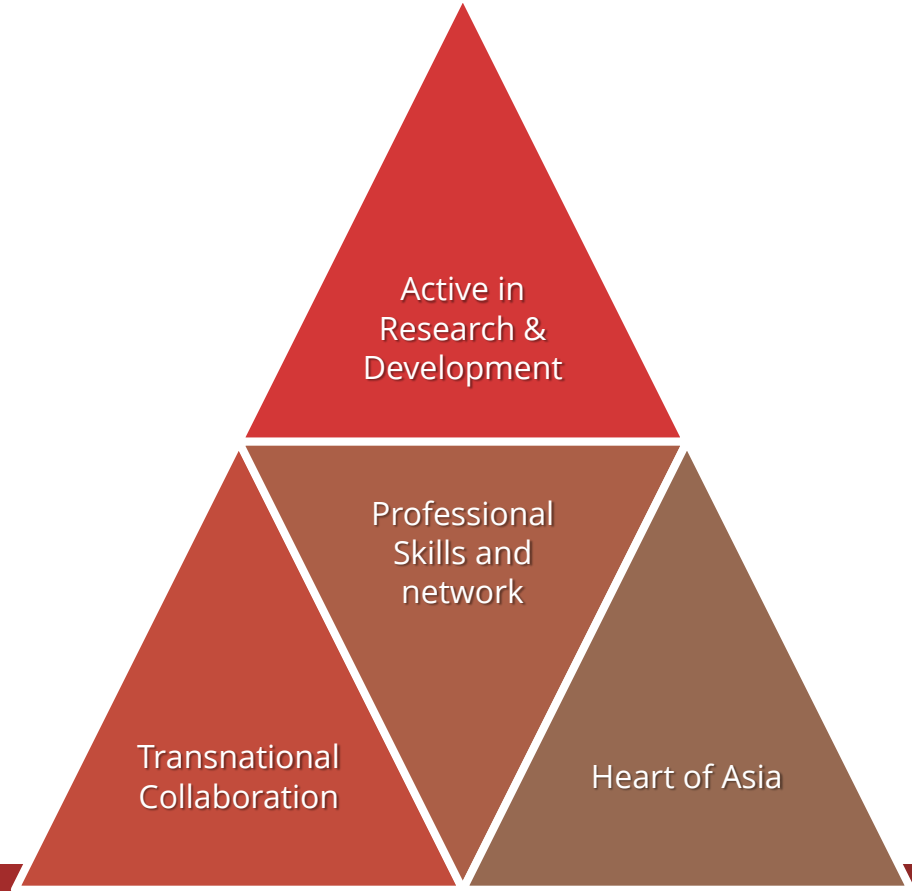
Virtual tour to the university campus

Virtual mandarin language and culture courses when available



Taiwan Experience Education Program

TEEP provides international students to gain a comprehensive educational experience in Taiwan, as well as equipping them with skills relevant to the Asian job market.



Website:





International Internship Pilot Program

To accelerate the development of key scientific research fields

To expand the international scientific research network

To strengthen technological strength

To build a solid foundation for industrial upgrading





TMU
**TAIPEI
MEDICAL
UNIVERSITY**

Contents

TMU CHRONOLOGY	02
A WORD FROM PRESIDENT	08
INTRODUCTION OF COLLEGES	
College of Medicine _____	12
College of Oral Medicine _____	14
College of Pharmacy _____	16
College of Nursing _____	18
College of Public Health _____	20
College of Medical Science and Technology _____	22
College of Humanities and Social Sciences _____	24
College of Biomedical Engineering _____	26
College of Management _____	28
College of Nutrition _____	30
College of Interdisciplinary Studies _____	32
TMU HEALTHCARE SYSTEM	
Taipei Medical University Hospital _____	36
TMU Wanfang Medical Center _____	37
TMU Shuang Ho Hospital _____	38
TMU Taipei Cancer Center _____	39
TMU Taipei Neuroscience Institute _____	40
Taipei Medical University Hsin Kuo Min Hospital _____	41
INTERNATIONAL MEDICAL	
Health Care Beyond Borders _____	44
Lead regionally, connect globally _____	46
A Welcoming Campus for International Students _____	48

TMU CHRONOLOGY

Taipei Medical University



February 23, 1960
The College's two founders, Dr. Hu Shui-Wang and Hsu Chien-Tien photographed in front of the College's preparatory office on Hankou Street.



June 11, 1960
Group photo of the Inaugural Class



August 1, 1976
Taipei Medical University Hospital



July 17, 1996
Taipei Municipal Wanfang Hospital

September 8, 1959

The Board of Trustees for "Taipei Medical College" was established, with Dr. Hu Shui-Wang serving as the chairman. Dr. Hsu Chien-Tien was the first dean of the College.

February 23, 1960

The Ministry of Education approved the school's application to establish Taipei Medical College on June 1.

June 11, 1960

June 1 was designated as the College's anniversary. "Honesty and Simplicity" was selected as its motto.

August 1, 1960

The School of Medicine, School of Dentistry and School of Pharmacy were established, and welcomed their inaugural class of students.

June 1, 1970

The College held its campus-wide sports day on its 10th anniversary, and established the Alumni Association.

August 1976

The Taipei Medical University Hospital opened.

August 1, 1983

Established Master's Degree Program under the Graduate Institute of Pharmacy, which became the College's first graduate institute.

May 1989

Established the Student Association.

July 17, 1996

The Taipei City Government commissioned the College to operate Taipei Municipal Wanfang Hospital. It's the second affiliated hospital.



Taipei Medical University



2008
Medical Mission in Kingdom of Eswatini



July 1, 2008
Shuang Ho Hospital

September 8, 2000

The Ministry of Education approved Taipei Medical College's application to be renamed as Taipei Medical University (TMU).

March 8, 2004

TMU signed a contract with the Department of Health to hold operation rights of Shuang Ho Hospital.

September 2006

TMU was selected as a participant in the Ministry of Education's Elite Research Center Development Plan, and has received over NT\$600 million subsidies over the past 10 years for continual participation.

2008

TMU dispatched medical missions to two diplomatic allies in Africa.

July 1, 2008

Shuang Ho Hospital, the first Build-Operate-Transfer project undertaken by TMU and commissioned by the Department of Health, was officially opened. It's TMU's third affiliated hospital.

2010

Selected by the Ministry of Education as one of the two flagship universities for general education in Taiwan.

The CSR reports of TMU and three affiliated hospitals received AA1000 and GRI G3 international accreditations.

2011

TMU passed five school evaluation indicators conducted by the Ministry of Education.

2012

All three affiliated hospitals received US Joint Commission International (JCI) accreditation

TMU and three affiliated schools won Executive Yuan National Quality Award (13th, 20th, 21st and 22nd respectively).

2013

Received accreditation from Foundation for International Cooperation in Higher Education of Taiwan (FICHET), while being re-designated by the WHO as a member of its International Safe School Network.

Launched Taiwan Health Center program in Marshall Island.



Translational Cancer Research Center's Academic Research Team



August, 2022

The plan for Shuang-Ho Campus was approved by the Ministry of Education

**March 21,
2014**

TMU's Translational Cancer Research Center received NT\$100 million grand for being selected in the Ministry of Education's Aim for the Top University Program.

2015

Signed bilateral medical cooperation MOU with Panama.

2016

Awarded funds from International Elite Cultivation Project under the Ministry of Education to promote the project jointly with University of Chicago and the Johns Hopkins University.

**April 17,
2018**

College of Interdisciplinary Studies officially opened.

**April 21,
2018**

TMU Taipei Neuroscience Institute officially opened.

2014

Ranked 46th in the QS Asia University Ranking and among top 400 universities in QS World University Ranking. Ranked in the top 100 in medicine, and top 200 in pharmacy and pharmacology.

**June 18,
2019**

The cooperation management model between TMU and Hsin Kuo Min Hospital has been started

**August
2022**

The plan for Shuang-Ho Campus was approved by the Ministry of Education

**Sep 23,
2022**

Cancer Building Opened

**June 1,
2023**

Shuang Ho Campus officially opened

BECOMING A WORLD-LEADING UNIVERSITY WITH SUSTAINABLE DEVELOPMENT AND INNOVATION

About Taipei Medical University-Message from President Mai-Szu Wu

Taipei Medical University (TMU), established in 1960, is home to 11 colleges, one general education center, and over 6,000 students, with nearly 50,000 alumni around the world. TMU boasts of six affiliated hospitals, including TMU Hospital, Taipei Municipal Wanfang Hospital, Shuang Ho Hospital, Taipei Cancer Center, Taipei Neuroscience Institute, and Hsin Kuo Min Hospital. Together, the hospitals host a total of 3,000 beds and over 9,000 faculty and staff members.

After six decades of hard work, TMU has transformed into an innovation university among top 100 universities in Asia. Our mission at TMU is to educate biomedical talents with humanity, innovation, and global vision. We strive to develop a comprehensive education system that integrates teaching, research, industrial collaboration, and medical care. In recent years, we have demonstrated great achievements in education, research, medical service and innovative R&D in the biotechnology industry. Our efforts have won growing recognition at home and abroad.

In 2023, TMU is ranked 324th in the Times Higher Education (THE) World University Rankings, 3rd among universities in Taiwan. In Asia, TMU is ranked 43rd in the THE Asia University Rankings. In the Essential Science Indicators (ESI) 2023, TMU made great progress with a total of 11 categories ranked among the top 1%. Newly listed category is Ecology/Environment in addition to our consistently high-performing ten areas including Clinical Medicine, Pharmacology & Toxicology, Neuroscience & Behavior, Biology & Biochemistry, Immunology, Chemistry, Psychology/Psychiatry, General Social Sciences, Molecular Biology & Genetics, and Agricultural Sciences.

In Taiwan, TMU has been named the number one among medical universities and private universities in the 2022 university ranking published by Global Vision Magazine, for five consecutive years. The achievement highlights TMU's efforts on becoming a world's leading university.

In the 2023 Impact Rankings of THE, TMU is among top 200 higher education institutions, and ranked number six in the "SDG3-Good Health and Wellbeing" category in the world. In the era of globalization and rapid societal changes, TMU fully supports the United Nation's Sustainable Development Goals (SDGs) and have made SDGs part of our operational guidelines.

At TMU, our vision is "taking medical education as the foundation, developing biomedicine for clinical application and becoming a university of innovation with social impacts." We focus on problem-solving capabilities in education and research, pursue leading innovative R&D achievements and strong entrepreneurial spirits, and adapt changes quickly to obtain resources external in order to make TMU become a driving force behind societal and economic developments in Taiwan.

With "educate for the future" as the philosophy, our goal is to cultivate the students as well-rounded biomedical talents. In the meantime, we prioritize distinctive research fields and encourage turning academic research into business opportunities. The university has established 28 start-ups with capitals over TWD \$2billion. Among them, "3D Global Biotech" has completed the Emerging Stock Market registration.

In June 2023, the opening of ShuangHo Campus starts the third wave of growth for TMU. Accompanied by the medical area and administrative space of Shuang Ho Hospital, it has become Taiwan's first trinity biomedical park, combining medical university, biomedical industry and hospital.

In the future, ShuangHo Campus will combine of various cutting-edge technologies of genetics, cell biology and immunology, collaborate with major research institutions and innovative enterprises at home and abroad,

and integrate with AI, big data, medical materials and medical engineering to cultivate outstanding biomedical talents capable of dedicating themselves to R&D or related manufacture fields such as precision medicine. Furthermore, it aims to evolve into a significant base for developing top translational medicine research and accelerating industry-academia collaboration and incubation.

Education, research, and medical care are the core missions of TMU, and continuous innovation is one of the keys to strengthen the competitiveness. Moreover, TMU is committed to facilitating sustainable development, fulfilling social responsibilities, and creating a better future together.

In response to the mission and social responsibility, TMU has penned the "TMU 2030 White Paper: A Ten-year Vision" with six key strategies: cultivate interdisciplinary new generation biomedical talents, develop world-leading research areas, expand influence internationally, build up an innovative and entrepreneurial ecosystem, upgrade capacity and efficiency of administrative system, and accomplish the medical-industry chain. With practical planning, steady steps and team effort, TMU and its six affiliated hospitals will keep moving forward to make innovation continuously and bring positive impact worldwide.



INTRODUCTION OF COLLEGES

Taipei Medical University



Founded in 1960

COLLEGE OF MEDICINE

The College of Medicine cultivates health professionals and leaders with the educational goal of serving local communities. We emphasize humanities in medical education, and help students develop compassion, global vision, communication skill, leadership, social responsibility and international competitiveness. The College comprises seven academic units, up to 550 faculty members including full-time professors, adjunct professors and clinical instructors, and almost 1500 students from our undergraduate, Master's and Ph.D. programs.

The School of Medicine initiated the Freshman Inauguration, Human Anatomy Remembrance Ceremony and White Coat Ceremony in Taiwan. We have also created the On Doctoring Program (Early Clinical Exposure), Objective Structured Clinical Examination (OSCE), and Group OSCE clinical practice training system, which have been regarded as role models for medical schools nationwide. TMU is the first university in Taiwan to establish the School of Respiratory Therapy, which was founded in 2003. The College further established the Master Program in Thoracic Medicine, School of Respiratory Therapy in 2015 to offer the Master's degree in health science with the specialization in respiratory therapy. In 2016, we collaborated with Georgia State University of the USA to institute "Integrated Master's Degree". Through this dual degree program, we provide international academic exchange opportunities with an aim to broaden students' global visions and to cultivate advanced clinical practitioners.

The goal of the Graduate Institute of Clinical Medicine is to train physicians for a career as physician scientists with exceptional research capacities. Three core aspects of our curriculum are Disease-Oriented Research, Research Oriented Learning and Dual Mentorship. We offer courses in clinical trials, translational medicine, clinical & translational epidemiology, clinical evidenced medicine, cell biology, molecular biology, lab rotation and research techniques, applied statistics, research design, advanced paper writing and genetic medicine. With these independent research skills, we envision our graduates to improve the quality of medical care and promote social welfare.

The Graduate Institute of Medical Sciences (GIMS) is specifically designed for graduate students who are interested in translational research in biomedical sciences. GIMS offers master's and doctoral degrees in four programs, including (1) Biochemistry/ Cellular and Molecular Biology (MCMB), (2) Cellular Physiology/Neuroscience Science (CPNS), (3) Molecular

Pharmacology (MP) and (4) Microbiology/Immunology (MI). The goal of Master's Programs in GIMS is to instill our students with fundamental knowledge in biomedical sciences and refined skills in conducting scientific experiments, so that they will become experts in research. The goal of Ph.D. program, on the other hand, is to educate students with the most modern multidisciplinary knowledge and become independent investigators. With an impressive record, GIMS cultivates high-caliber students who start their promising careers soon after graduation.

The International Master/Ph.D. Program in Medicine (IGPM) was founded in 2016. The IGPM recruits international students from Vietnam, Indonesia, United States, Switzerland, Gambia, and Malawi with expertise in clinical professions, biomedical research and healthcare areas. To accommodate individual aspiration, interests and career goals, IGPM designed flexible study schemes and courses for students. These courses are categorized into six areas including (1) Molecular Medicine, (2) Community Medicine, (3) Tropical Medicine, (4) Neurological Medicine, (5) Clinical Medicine, and (6) Healthcare Education. The goal of IGPM is for our students to become elite scholars or scientists with abilities to initiate research projects and conduct independent research, thus to play significant roles in their own professional fields. Furthermore, we expect IGPM alumni to build an academic bridge between TMU and their home countries for more international collaborations in medicine and biomedical research.

The International Ph.D. Program for Cell Therapy and Regeneration Medicine (IPCTRM) began to recruit students in the fall semester of 2017. The mission of this program is to promote translational medicine and clinical trials of cell/stem cell based therapy. IPCTRM provides diverse research topics, including immune cell applications in cancer treatment; blood and mesenchymal stem cells for regenerative processes, wound healing, graft-versus-host disease, and amyotrophic lateral sclerosis; as well as drug screening platform with cancer stem cells and disease-specific induced pluripotent stem cells. IPCTRM brings experts and scientists together to facilitate outstanding research not only in basic study, but also in clinical translational medicine and industrial cell/stem cell product development.

Founded in 2018, TMU Professional Master Program in Artificial Intelligence in Medicine focuses on the rise of artificial intelligence. The goal of the program is to cultivate interdisciplinary talent by providing integrated courses in artificial intellectual skill and medical knowledge, and to construct precise medicine and technology. We provide in-service specialization program through intensive courses and clinical practice, including analysis of signal/data, semantics, image recognition and clinical medicine, smart hospitals and other professional courses. The program aims to strengthen students' ability to integrate cross field learnings and cultivate artificial intelligence talent for Taiwan's medical industry.

Internationalization and academic excellence are the core missions of the College of Medicine. We regularly affiliate with elite institutions worldwide and work closely with them to seek breakthroughs in medicines. We also expect to deepen and strengthen interdisciplinary cooperation in the medical and biomedical research fields, joining hands to create a future of mutual benefits.

Departments

School of Medicine

School of Respiratory Therapy

Graduate Institute of Clinical Medicine

Graduate Institute of Medical Sciences

Master Program in Thoracic Medicine, School of Respiratory Therapy

The International Master / Ph.D. Program in Medicine

The International Ph.D. Program for Cell Therapy and Regeneration Medicine

Professional Master Program in Artificial Intelligence in Medicine

Honors and Specialties

First college in Taiwan to stage "White Coat Ceremony" for medical students

First college in Taiwan to establish the Master Program in Thoracic Medicine, School of Respiratory Therapy

First college in Taiwan to establish International Ph.D. Program for Cell Therapy and Regeneration Medicine

A total of 18 alumni received Taiwan Medical Contribution Award

Set up five college-level Research Centers;

- Medical and Cosmetic Research Center
- Research Center of Maternal Child Health
- Research Center of International Tropical Medicine
- Research Center of Sleep Medicine
- Research Center of Rehabilitation Engineering and Assistive Technology



Founded in 2000

COLLEGE OF ORAL MEDICINE

College of Oral Medicine provides the most comprehensive oral medicine education system and the largest oral medicine clinical practice program among the eight oral medicine programs in Taiwan. School of Oral Hygiene, established in 2001, was the first oral hygienist education program in Taiwan. The School of Dental Technology was also the nation's first such program set up in the university system. School of Dentistry was one of the first three schools founded in TMU, and has been the first choice for candidates applying to private institutions.

Highlights of the College's research and development include (i) oral cancer and temporomandibular joint dysfunction, (ii) big data analysis/ data mining, (iii) dental materials, tissue engineering and stem cell applications, (iv) computerized/digitalized facial reconstruction (v) 3D computer-aided design and manufacturing (3D CAD/CAM). The College is not limited to training clinical staff, but seeks to connect with both academia and the industry in an effort to cultivate holistic talent who are able to balance education, research and patient care. Furthermore, the College of Oral Medicine is the first dental education college in Taiwan to create four Mini Programs: Ethical Education of Oral Medicine, Artificial Intelligence of Dentistry, Oral Healthcare Management, and Interdisciplinary Study.

The School of Dentistry was established in June 1960. In 1993, the school established a Master's program, while the Ph.D. program was launched in 2004. There are 10 academic divisions, including Operative Dentistry, Periodontology, Orthodontology, Oral and Maxillofacial Surgery, Pediatric Dentistry, Endodontics, Dental Morphology and Dental Materials, Occlusion and Temporomandibular Disorder, Dental Humanities and Oral Hygiene.

The school has been committed to dentistry and clinical education over the years. The department of dentistry offers an Independent Study course, Clinical Clerkship program, and clinical teaching models of OSCE, GOSCE and TRM.

The Master's and Ph.D. programs offer a dual advisor system, which recruits "clinical specialist advisors" and "basic medical researchers" as faculty members.

The School of Dental Technology is the only dental technician program established by the College of Oral Medicine in Taiwan, combining aesthetics with medical humanities and developing a comprehensive curriculum on digital oral engineering automation.

As the areas of practice in oral medicine emerge, the school has planned three research focuses in the Master's program: oral biomaterials, digital oral engineering, and oral tissue regeneration. In addition to obtaining professional certificates, the school expects students to continue with oral medicine studies for the sustainable development in oral technology.

TMU is the first university to establish the School of Oral Hygiene (SOH) that is dedicated to cultivating oral hygiene professionals with humanities, social responsibilities and global visions. The goal is to advance our oral medicine education in accordance with global trends and improve the quality of oral care in Taiwan.

The SOH is equipped with comprehensive facilities including a dentistry skull model classroom, technology lab, and dental clinic model classroom. The school recruits 35 students every year, and invites professionals to offer courses on oral hygiene knowledge, oral hygiene promotion, disease prevention and clinical training. There are special programs on oral hygiene problem-based learning, OSCE test on oral hygiene clinical skills, and international courses on oral hygiene. The school also offers clinical training opportunities at local communities, teaching clinics and dental departments in affiliated universities. These opportunities equip students with both professional/clinical capabilities in oral hygiene, and skills in community education and communication.

The educational purposes of the College are humanism, excellence, internationalization, and research orientation. Our achievements in holistic education, research and development, community service and academic-industry links have won recognitions from the government, the industry, the academia, and the medical community. Our goal is to prepare TMU students to triumph in the global academic community and develop international perspectives.

Departments

School of Dentistry
Bachelor's, Master's and Ph.D. programs

School of Dental Technology
Bachelor's and Master's programs

School of Oral Hygiene
Bachelor's program

Honors and Specialties

The nation's most comprehensive educational institution for oral medicine with three departments, Master's and PhD programs.

Offers the largest amount of digital educational courses for clinical dentistry

The nation's most integrated AR&VR clinical education laboratory

Equipped with five distinguished research centers and three clinical practice-oriented research clusters

"Oral Care Service Team" and "Overseas Medical Mission" have dedicated time and efforts in remote villages and areas short of medical resources

Proactively promotes international exchange and encourages students to participate in exchange programs in cooperation with well-known universities in the United States, Japan, and Europe.



Founded in 2000

COLLEGE OF PHARMACY

Founded in 2000, College of Pharmacy offers an innovative pharmacy curriculum and enjoys an international reputation in imparting high quality education and training in pharmaceutical sciences and pharmacy practice. The college educates around 200 undergraduate students and 70 graduate students every year. The alumni of the college have established themselves as successful pharmacy professionals and emerged as a force strongly influencing the health care sector by holding leadership positions in the industrial as well as academic sector.

The Graduate Institute of Pharmacognosy (GIP) is the only institute that comprehensively focuses on pharmacognostic research to investigate herbal drug resources. GIP is actively involved in the study of the physical, chemical, biochemical, and biological properties of natural drugs. More specifically, the GIP 's projects focus on natural medicinal research and clinical practice, such as the development of natural resources in Taiwan, the study of natural products and their biological activities, as well as traditional Chinese medicine. In addition, GIP collaborates with other faculties to develop key talent and the researchers of next generation who can maximize the benefits of natural medicines. Moreover, in response to the growing demand for traditional Chinese medicine, GIP and the American College of Acupuncture & Oriental Medicine (ACAOM) established a joint health management master's program to provide a comprehensive health management master's program. To develop students' interdisciplinary skills by integrating knowledge and clinical experience, GIP has also established industry-academia collaborations by recruiting industry experts as their faculty members.

One of the three founding schools of Taipei Medical College, School of Pharmacy was established in 1960. The school has approximately 30 full-time faculty members, and is divided into two departments: Department of Pharmaceutical Sciences and Department of Clinical Pharmacy. The Department of Pharmaceutical Sciences offers courses in pharmaceutics, pharmacognosy, medicinal chemistry, pharmaceutical analysis, drug design and other related disciplines. Department of Clinical Pharmacy focuses on clinical research and internship training in hospitals or other medical facilities. Educational development of countries at present heavily relies on worldwide interconnectedness and can be attained through international collaborations and exchange programs. In the present era of high competitiveness in knowledge based global economy, the pharmacy graduates need to be highly skilled with innovation capacity to cater to the needs of academic and industrial sector. To resonate with the latest demands of the pharmacy education, the school of pharmacy has established an international exchange program, which allows third-year students to study clinical pharmacy and leadership in well-known universities in the US including University of Southern California (USC), University of Illinois at Chicago, University of Connecticut and Georgia State University. Working on similar lines, the school of pharmacy has also initiated a dual degree education program to concomitantly extract the intended academic satisfaction as well as intercultural benefits. In this context, the School signed dual degree assignments with USC Master's Program in Regulatory Science. In a nut shell, the distinguished school leaves no stone unturned to advance pharmacy education further and in developing a curriculum that is well-rounded, imparting a firm grounding to the students in pharmaceutical sciences and facilitating future specializations. To attain this, the school has shifted the focus of curriculum design from being solely product-oriented to patient-oriented with an aim to prepare our graduates as truly professional pharmacists well versed with all areas of pharmacy education.

Master Program in Clinical Genomics and Proteomics provides the latest training in cutting-edge genomics, proteomics and metabolomics technologies. We aim to cultivate caregivers or researchers who can apply the training and their clinical knowledge to personalized treatment. We use AI technology to conduct cross-disciplinary research collaborations in order to achieve the ultimate goal of precision medicine. To foster students' interdisciplinary thinking and broaden their international perspective, this program invites well-known international scholars as visiting and chair professors to enhance the quality of education and research.

Ph.D. Program in Clinical Drug Development of Herbal Medicine aims to cultivate key talents in R&D of Chinese herbal medicine, translational medicine, and the new drug clinical trials, so as to enhance the pharmaceutical R&D and the academic-industry cooperation. It also promotes cross-disciplinary integration and nurture students with creativity, innovation, and entrepreneurial abilities to implement basic pharmaceutical skills and biotechnology into industrial R&D. A joint dual Ph.D. degree program with University of Cagliari has also been signed with the goal to expand student's international horizons and enhance their competitiveness in the field of pharmacy worldwide.

Our esteemed program, "The Ph.D. Program in Drug Discovery and Development Industry," focuses on advancing new drug development in both small molecular and large molecule therapeutics, including bispecific antibodies and antibody-drug conjugates (ADCs). By integrating the research and development capabilities of prestigious universities and research institutes, we bridge the gap between theoretical learning and practical application in these domains. Through our program, we equip students with the expertise required to tackle the complexities of developing innovative therapeutics. We strive to generate pioneering research results and seamlessly translate them into real-world industries. Our efforts contribute to optimizing the industrial environment and driving biotechnology sector innovation. With sustainable university management principles at the core, we believe in achieving our goals of advancing new drug discovery and development.

Departments

School of Pharmacy
4-year BS/ 6-year Pharm. D./ Master Program in School of Pharmacy / In-Service Master Program for Clinical Pharmacy in School of Pharmacy/ Ph.D. Program in School of Pharmacy

Graduate Institute of Pharmacognosy

Master Program in Clinical Genomics and Proteomics

Ph.D. Program in Clinical Drug Development of Herbal Medicine
joint program with the National Research Institute of Chinese Medicine, Ministry of Health and Welfare

Ph.D. Program in Drug Discovery and Development Industry

Honors and Specialities

Ranked 94th in 2019 QS World University Rankings for Pharmacy & Pharmacology

Signed dual degree with Department of Regulatory and Quality Sciences of University of Southern California

Signed dual degree with St. John's University (Pharmacy Administration and Public Health Program)

Student exchange programs with University of Southern California, University of Illinois at Chicago, University of Connecticut, University at Buffalo State University of New York, and Hokkaido University

International academic cooperation with Hokkaido University, Institute of Physical and Chemical Research (RIKEN), University of Cagliari, Case Western Reserve University, University of Chicago, University of Southern California, and University of California, Davis

IND FDA and TFDA approved anti-cancer drug developed by Dr. Liou Jing-Ping, Dean of College of Pharmacy, for Phase I clinical trial. The trial was completed successfully.

Dr. Liou Jing-Ping, Dean of College of Pharmacy, was awarded the 10th Junior Biomedical Award of TienTe Lee Biomedical Foundation

Dr. Chang Wei-Chiao, Vice Dean of College of Pharmacy, was awarded the 2016 Professor Chen-Yuan Lee Outstanding Research Award

Launched Pharmacotherapy Program with American College of Clinical Pharmacy, leading the trend of clinical pharmacy in Taiwan

Established Research Center for Pharmacoeconomics as the only department offering Health Technology Assessment program in Taiwan

A total of 15 Doctors of Pharmacy were trained in America, with the number being the highest in Taiwan. Eight of the US-trained doctors are Board Certified Psychiatric Pharmacists, which account for more than half of total pharmacists with board certification in Taiwan



Founded in 2000

COLLEGE OF NURSING

To Pursue Innovative Excellence; Promote Sustainable Society

TMU Nursing ranked No. 38 universities for Nursing in 2023 QS World University Rankings, maintaining No. 1 position in Taiwan. The CON has made tremendous progress in its strategic directions, particularly in teaching and research achievements. Under solid leadership of the school, we have strengthened our research capability and shown outstanding performance. Through teamwork and collaboration, the CON achieves better performance in teaching innovation, practice advancement, research quantity and quality. The CON will continue to extend our internationalization and research collaborations, to constantly increase TMUN's visibility and influence in the international academic community.

Since its inception in 1963 first as a 5-year junior college program, the College of Nursing has been devoted to educating health care professionals and launching research programs as well as clinical scholarship to advance the science of nursing and improve the quality of health care. We offer a comprehensive training plan, including Bachelor, Master's and Ph.D. Programs, to cultivate outstanding nurses and higher educated workforce. In 2016, the Post-Baccalaureate Program in Nursing was established to bring more professionals to Taiwan.

In response to the growing demand for trained professionals in aged care, the CON established the School of Gerontology Health Management in 2007 and offered Master's Program since 2018. The CON also established Master's Program in Long-Term Care in 2013. School of Gerontology Health Management and Master Program in Long-Term Care were merged into School of Gerontology and Long-Term Care in 2022. The CON also established International Ph.D. Program in Gerontology and Long-Term Care to recruit international students in 2022.

In terms of teaching, the CON has professional teaching and research teams, and integrates resources from TMU and six affiliated hospitals for students to conduct their practicum in appropriate institutions or communities. We also provide high technology simulation materials for teaching, OSCE and interdisciplinary professional courses. In 2017, the CON re-built the Intelligence Clinical Nursing Skill Center (ICNSC), which enables

students to practice clinical skills in a safe environment. ICNSC is equipped with high technologies, including Bedside Intelligence Service System and Vascular Simulation System to enhance students' nursing skills, professional knowledge, communication skills and ability of cooperation. These systems also help faculty and research staff better identify problems during practice.

In the research area, the CON emphasizes research performance and academic achievement. Our faculty members have led outstanding research projects that widely recognized in national and international journals and conferences. Over the past 5 years, we have been awarded research grants from various national institutions. Our research papers and academic presentations have a strong track record of published work in top-rated journals. These publications represent our significant contributions to nursing knowledge and evidence-based nursing. Our faculty members are often invited as editors or reviewers of these national and international journals. Moreover, the CON houses the Research Center of Active Ageing (RCAA), which is a college-leave research center to serve the elderly as a day care center as well as a "smart living lab" for teaching and research. Through intensive research efforts, we aim to develop a holistic care discourse on ageing society from the medical, social, cultural, and environmental perspectives.

As for international collaborations, the CON has maintained strong partnerships with well-known universities and college in the world as a part of the effort to build up a group of health care specialists with professional knowledge, humanity cultivation and global competitiveness. CON host annual international conference and promote frequent mutual visits with sister schools and research collaborations. We also encourage students' participations in global practicum and joint degree in Master's and Ph.D. Programs, as well as overseas medical services to broaden their international horizon. Furthermore, the CON established an international Ph.D. Program in Nursing in 2016 to recruit more foreign students, marking a milestone for the College of Nursing at Taipei Medical University.

Our faculty members have taken a leading role in national and international nursing associations and participate in numerous well-known nursing societies. They devote themselves in teaching, research, and service to achieve TMU's educational goals. As a result, our alumni hold various positions from vice superintendent, director, supervisor, head nurse to assistant head nurse in hospitals and other healthcare institutions. We will continue our efforts to cultivate health care professionals and promote research and innovation with the goal to build an internationalized and outstanding college.

Departments

School of Nursing
Bachelor, Master's and Ph.D. Programs

School of Gerontology and Long-Term Care
Bachelor and Master's Programs

Post-Baccalaureate Program in Nursing

International Ph.D Program in Gerontology and Long-Term Care

Honors and Specialties

Ranked No. 38 in the 2023 QS World Universities Ranking for Nursing

Ranked No. 35 in the 2022 ARWU World University Rankings for Nursing

Establish global partnership with over 200 universities around the world, such as United State, Japan, Australia, Hong Kong, Thailand, and Indonesia

Dual Ph.D. Program with University of Wollongong and Western Sydney University

Dual Master's Program with University of Wollongong and Universitas Gadjah Mada

Established the nation's first International Ph.D. Program in Gerontology and Long-Term Care in 2022

In 2017, Research Center of Active Ageing and Intelligence Clinical Nursing Skill Center were established.

Set up three leading research teams:

- Mind-Body Research
- Evidence-based Translational Research
- Exercise in Elderly and Chronic Disease Research



Founded in 2011

COLLEGE OF PUBLIC HEALTH

The College of Public Health was founded in 2000 and is comprised of the School of Public Health (Undergraduate, Master's, and Ph.D. Program), Graduate Institute of Injury Prevention and Control (Master's and Ph.D. Program), Master's Program in Global Health and Development, Ph.D. Program and Master's Program in Applied and Molecular Epidemiology. We also have a research center: the Health Policy and Care Research Center.

The Master's Program and the Ph.D. Program in Global Health and Health Security offer an all-English curriculum to recruit foreign students. The programs provide knowledge of Taiwan's healthcare insurance system and disease prevention efforts to international students with an aim to share Taiwan's experience in the areas and promote global cooperation.

As medical technology evolves and advances precision medicine and personalized preventive medicine, Taipei Medical University established the Master's Program in Applied Epidemiology in 2017. The program, different from the regular epidemiological training based on methodologies, focuses more on the benefits of the industry and policy applications. The curriculum includes Molecular Biology, Big Data Analysis, and Cost-Effectiveness. It encourages students from various professional backgrounds to join and build integrated and value-added platforms for interdisciplinary training.

The School of Public Health focuses on the development of three areas: Biostatistics & Epidemiology, Community Health, and Environmental Health. We aim to cultivate public health experts and promote major health issues. For example, the school established Healthy Work Environment Promotion Center to evaluate the health of work environments and promote tobacco hazards prevention. It has helped improve the work environment of more than 2,000 workplaces and protect the health of workers.

In addition, the program cultivates students' international perspectives by organizing international professional forums on topics including precision medicine, biometrics, and disease prevention interventions. These forums create opportunities of knowledge exchange and practical experiences for students. It further establishes internationalization and interdisciplinary learning platforms to increase students' international mobility.

The "Head and Spine Trauma Database," established by the Trauma Prevention Center under the College of Public Health, is one of the biggest trauma databases in the world. The school also established the Air Medical Emergency Service Center and the Telehealth Telecare Center jointly with the Ministry of Health and Welfare to provide emergency medical service to remote areas in the country, saving millions of government fund.

In the future, we will enhance the quality of research and teaching through accreditation internally and externally, such as the CEPH (the Council on Education for Public Health) accreditation, through organizing interdisciplinary research teams, recruiting talent, gathering research resources, and promoting internationalization. Meanwhile, we will continue to equip our graduates with solid capabilities and competitiveness in the workplace, making the College of Public Health at TMU the best choice for students in Asia.

Departments

School of Public Health
Bachelor's, Master's, Ph.D. programs

Graduate Institute of Injury Prevention and Control
Master's, Ph.D. programs

Master's Program in Global Health and Health Security
Ph.D. Program in Global Health and Health Security
All-English program

Master's Program in Applied and Molecular Epidemiology

Health Policy and Care Research Center

Research Center of Global Health Security

Research Center of Health Equity

Dr. Chi-Chin Huang Stroke Research Center

Honors and Specialties

Established the nation's first Graduate Institute of Injury Prevention and Control in 2000.

Established the nation's first all-English master's degree program.

In 2008, Research team honored with 6th National Innovation Award.

College faculty and students promoted motorcycle helmet legislation and the Tobacco Hazards Prevention Act.

College faculty received various domestic and international honors (National Quality Awards, Medical Dedication Awards, APACPH Outstanding Contribution Awards, Ministry of Health and Welfare Third Class Medal, and Fulbright fellowships etc.)



Founded in 2011

COLLEGE OF MEDICAL SCIENCE AND TECHNOLOGY

The College of Medical Science and Technology (CoMST) currently consists of one undergraduate department, two graduate institutes, two master's degree program, and five doctoral degree programs. It encompasses five major areas of specialization: Medical Science and Biotechnology, Biomedical Informatics, Cancer Biology and Drug Discovery, Neuroscience, and Translational Medicine.

The CoMST was established in 2010, building upon the foundation of the School's Department of Medical Laboratory Science and Biotechnology and the Institute of Biomedical Informatics in medical applications. Starting in 2010, it collaborated with two major academic research institutions in Taiwan, the National Health Research Institutes (NHRI) and the Academia Sinica, to offer three doctoral degree programs: "Cancer Molecular Biology and Drug Discovery," "Medicine Neuroscience," and "Translational Medicine." Additionally, in 2015, 2017, 2020, and 2022, the college established the "Ph. D. Program in Medical Biotechnology," "Graduate Institute of Cancer Biology and Drug Discovery (Master)," "International Ph.D. Program for Translational Science," and "International Master Program in Medicine Neuroscience," respectively. In February 2023, the college will integrate its five major areas of specialization and degree programs into the Shuang-Ho campus, establishing close connections with Shuang-Ho Hospital and the international Biodesign program to construct an international Shuang-Ho Park jointly, cultivating biomedical talents with a global perspective and creating a benchmark institution with international influence and competitiveness.

The School of Medical Laboratory Science and Biotechnology, established in 1965, has cultivated thousands of outstanding alumni with great performance in industry, government, academia and research fields. The school provides diverse and solid experimental medicine-related courses and practical training. It focuses on cultivating clinical laboratory talents, supplemented by biotechnology industry R&D personnel and medical researchers. In 2015, the newly

established doctoral program in medical biotechnology brought life science research into a new era.

The Graduate Institute of Biomedical Informatics, the first biomedical informatics graduate institute in Asia. In 2015, the institute signed a memorandum of cooperation with Singaporean companies-PULSESYNC and CADI SCIENTIFIC, and started a summer internship program with the two companies in 2016, and also signed with Dsfederal Inc. for summer internship in USA. Clinical informatics uses theories and methods of information technology to support patient care and improve patient-care quality. The research scope of basic medical informatics includes biomedical database, data analysis and exploration, as well as genetic database of diseases, etc. The goal is to develop biomedical imaging and signal processing technology, as well as the integration of information technology and public health, with translational medicine being the direction of future research.

Ph.D. Program for Cancer Molecular Biology and Drug Discovery, driven by the need for clinical medicine, focuses on the development of new cancer drugs and explores fast and effective ways in the early diagnosis and treatment of cancer. In 2017, the school established the Graduate Institute of Cancer Biology and Drug Discovery by combining the existing doctoral programs in cancer biology and drug discovery, thus making its education system more complete with the master's programs. As a result, students are able to establish a solid foundation from the beginning and acquire professional knowledge in cancer biology and drug research and development.

Ph.D. Program in Medical Neuroscience mainly explores the physiological and pathological mechanisms of severe central nervous system injuries and neurodegenerative diseases. The goal is to develop effective drugs or strategies to treat or improve related diseases. In 2022, the college launched the International Master Program in Medical Neuroscience to establish a comprehensive education system that integrates with the Ph.D. Program in Medical Neuroscience, enabling students to learn from the fundamentals and build a solid foundation. The program accepts international students.

The Ph.D. Program for Translational Medicine has established a comprehensive research and educational system in order to cultivate cross-field research talents in translational medicine. In 2020 and 2022, the International Ph.D. Program and Master Program in Translational Medicine were established with the aim of nurturing talented researchers in this field and promoting educational exchanges between the university and foreign educational institutions. Through two-way communication with international graduate students from various countries, the program has gained a better understanding of research topics that meet interational needs.

Departments

School of Medical Laboratory Science and Biotechnology

Bachelor's, In-Service Master and Master programs

Institute of Biotechnology in Medicine

Graduate Institute of Biomedical Informatics

Master and Ph.D. programs

Graduate Institute of Cancer Biology and Drug Discovery

Master

Ph.D. Program for Cancer Molecular Biology and Drug Discovery

Ph.D. Program in Medical Neuroscience

joint program with National Health Research Institutes

International Master Program in Medical Neuroscience

Ph.D. Program for Translational Medicine

joint program with Academia Sinica

International Ph.D. Program for Translational Medicine

International Master Program in Translational Medicine

Founded in 2011

COLLEGE OF HUMANITIES AND SOCIAL SCIENCES

The College of Humanities and Social Sciences (CHSS) is committed to internationalization and integration of research with pedagogy. Our internationalization efforts include attracting faculty and students from around the world. More than one-third of our curriculum is in English, accepting both foreign and Taiwanese students. For research and pedagogy, we are concerned both with empirical and with normative problems. As to the empirical, we conduct social science investigations, as well as research that focuses on the mind-brain. As to the normative, we conduct research related to legal and ethical issues. Most of our work is inter-disciplinary and a significant portion is designed so as to complement our College of Medicine, as well as our university's extensive network of hospitals.

In 2019, the Graduate Institute of Humanities in Medicine (GIHM) begins to readjust its focus, concentrating principally on the social sciences, especially sociology. The Graduate Institute of Health and Biotechnology Law (GIHBL), likewise is beginning to readjust its focus: as before, much attention is devoted to legal policies that pertain to translational medicine, pharmaceuticals, biotechnology, as well as food and drug regulation. But now it also is extending its scope to include public health law, along with bio- and medical ethics. In the Graduate Institute of Mind, Brain and Consciousness (GIMBC) faculty and students work together in a joint effort to understand the mind-brain nexus in healthy subjects as well as in neurological or psychiatric patients.

Currently CHSS offers MA degrees in social science (GIHM) and in law (GIHBL). GIMBC offers both an MS degree, as well as a Ph.D.

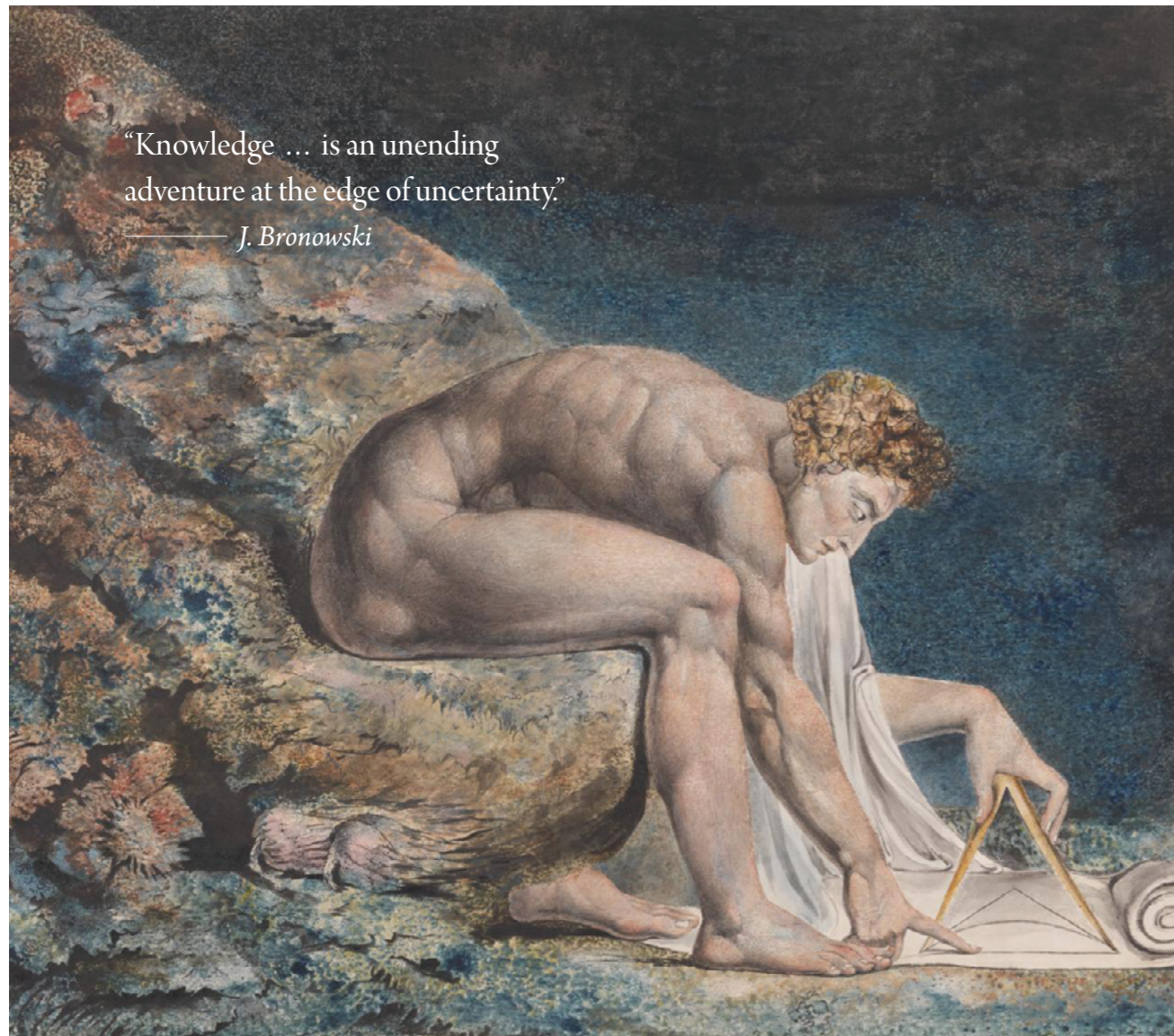
In our studies of society, law, and the mind-brain, we aim for consilience: that is, whenever possible, we seek to identify points of contact, even coherence, between the sciences and the humanities, between the empirical and the normative. In a similar spirit, we seek points of contact between Taiwan and other countries in the international community, recognizing that insularity is a pathway to intellectual stagnation.

As we enter the middle decades of the 21st century, we aspire to understand the world as it is, and to imagine the world, as it might become.

In the face of future uncertainties, CHSS will continue to embrace challenges and pursue new knowledge progressively.

“Knowledge ... is an unending
adventure at the edge of uncertainty.”

— J. Bronowski



Departments

Graduate Institute of Humanities in Medicine (GIHM)

Master's Degree

Graduate Institute of Health and Biotechnology Law / Professional Master Program in Health and Biotechnology Law

Master's Degree

Graduate Institute of Mind, Brain, and Consciousness (GIMBC)

Master and Ph.D. Program



Founded in 2015

COLLEGE OF BIOMEDICAL ENGINEERING

The College of Biomedical Engineering (CBME) was established in 2015 and is focused on inter-disciplinary research at the intersection of basic science, translational medicine, and engineering. CBME faculty possess a diverse variety of educational backgrounds and research expertise, ranging from clinical doctors, surgeons and molecular biologists to materials scientists, electronic engineers and physicists. All CBME faculty are dedicated to improving human health and wellbeing through the application of sound engineering and scientific principles.

Biomedical research and development is one crucial element of Taiwan's economic development roadmap. The market demand for biomedical technologies such as medical devices, diagnostic implants, joint replacements, drug delivery systems, protein therapeutics, tissue engineered grafts, cellular, subcellular and nanomedicine therapies is expanding rapidly. This demand is expected to increase even further as the local and global society continues to age. The Taiwan Society of Biomedical Engineering is currently formulating a board certification mechanism for biomedical engineers. Therefore, we envision that there will continue to be a need for highly-trained biomedical engineers with research experience, and that a degree in biomedical engineering is a sound investment for a successful future career.

CBME provides high quality educational programs at the undergraduate and graduate level, including the offer of internships in affiliated hospitals and private biotech and medical device companies in Taiwan. This provides hands-on practical experience, which is extremely beneficial for students to understand real-world applications of biomedical research. The internationally-directed CBME also provides dual-degree programs and scholarly exchange programs and research collaboration opportunities for students via partnerships with leading institutes such as the University of Southern California, USA; University of Lille, the University of Bourgogne Franche-Comté, FEMTO-ST Institute, and INSERM research units, France; University of Tasmania, Australia; and Tokyo University of Science, Japan.

The Graduate Institute of Biomedical Materials and Tissue Engineering (GIBMTE), Graduate Institute of Nanomedicine and Medical Engineering (GINME), School of Biomedical Engineering (SBME), International Ph.D. Program in Biomedical Engineering (IPBME) and Graduate Institute of Biomedical Optomechatronics (GIBOM) accommodate domestic and international undergraduates, master's, Ph.D. and postdoctoral trainees. All graduate level teaching is conducted in English, and CBME currently has students enrolled from close to 11 different countries, representing a proportion of over 60% at PhD level. We trust that this diverse, clinical needs-centered research and educational environment will generate strong growth momentum for Taiwan's biomedical technology industry and biomedical engineering research at a global level.

Students who graduate from CBME programs have developed into highly skilled biomedical engineers with a strong scientific background who also understand the ethical, social, and economic implications of their work. Moreover, many of our undergraduates continue their education with a graduate degree in engineering, medicine, or life sciences.

Through our continuous efforts, through the unique links our university has with its affiliated hospitals, and due to our location in the dynamic and friendly environment of Taiwan, our College has all the potential to develop into an internationally successful biomedical engineering hub.

Departments

School of Biomedical Engineering
Bachelor's program

Graduate Institute of Biomedical Materials and Tissue Engineering
Master's and Ph.D. programs

Graduate Institute of Nanomedicine and Medical Engineering
Master's and Ph.D. programs

International Ph.D. Program in Biomedical Engineering
Ph.D. program

Graduate Institute of Biomedical Optomechatronics
Master's program

Honors and Specialties

CBME offers a complete educational and research program in biomedical engineering through its undergraduate and graduate programs

Through CBME Graduate institutes, dual MS and PhD degrees with several foreign universities are available

CBME has established several research collaborations with international research institutes and universities throughout the world

CBME has access to over 237 sister schools in America, Asia, Europe, Africa and Oceania through links established at the TMU level



Founded in 2015

COLLEGE OF MANAGEMENT

Specializing in Smart Healthcare, Big Data and Cultivation of Experts and Leaders in Healthcare and Biotechnology Management

Taipei Medical University (TMU) established the College of Management in 2015. Based on information integration and innovative management as the foundation, the College responds quickly to the fast-changing society in the competitive environment. We focus on developing and applying information technology and big data on the management of healthcare institutions and the biotech industry. Looking to industry needs for guidance, the College aims to develop a pool of skilled administrative professionals and leaders in the healthcare and biotech industries.

analysis, and planning. We have diverse and experienced faculty to provide academic and professional training in the healthcare, statistics, information, and data science industries. Students are encouraged to apply big data technology and IT to solve practical issues. The institute ultimately has its sights on becoming the premier source of big data talent at TMU.

Executive Master Program of Business Administration (EMBA) in Biotechnology

As reflected in its motto, "Honesty and Simplicity," TMU launched the world-class EMBA program in Biotechnology in 2016. The program strives to cultivate health leaders with a strong commitment to social responsibility by offering quality, internationally recognized programs, developing platforms for teaching and research, and creating opportunities for lifelong learning. Through the cooperation of entrepreneurial students, teaching staff, medical researchers, and the biotechnology program, the program aims to become a globally renowned EMBA in Biotechnology.

School of Health Care Administration

TMU established the School of Health Care Administration in 1997 in response to the increasing demand for the healthcare industry's administrative personnel following Taiwan's National Health Insurance launch in 1995. Through its bachelor's, master's, and executive's programs, the school has fostered many outstanding professionals in the Taiwanese healthcare industry. The School of Health Care Administration also established its International Master Program in 2009. It was the first to use English as a medium of instruction in Taiwan for international students in health care administration. In addition to exporting Taiwan's healthcare management experience, the program also offers practical assistance to other countries.

International Ph.D. Program in Biotech and Healthcare Management

The program was established in 2019 in response to the trend of big data and AI applications. It aims to provide an integrated education in big data, smart healthcare, and management to cultivate future educators and research professionals and provide students with interdisciplinary and practical knowledge and a solid foundation in research.

Graduate Institute of Data Science

The Institute focuses on big data and artificial intelligence development. Our curriculum emphasizes integrated training in innovative applications, technology, data

Research Center of Data Science on Healthcare Industry

The center is established with three goals: cultivate data professionals, enhance research capabilities and deepen interdisciplinary integration. It aims to utilize data analytics technology in collaborative industrial projects that introduce big data and artificial intelligence while improving research, strengthening multidisciplinary collaboration, and promoting talent cultivation. The Taipei Big Data+ Alliance was set up in December 2015 to provide a platform for collaboration between industry, government, and academia.

Departments

School of Health Care Administration (Bachelor's, Post-Baccalaureate Program, Master's and Executive's programs)

Graduate Institute of Data Science

Executive Master Program of Business Administration in Biotechnology

International Ph.D. Program in Biotech and Healthcare Management

Health Care Data Science Research Center

History

1997: Established the School of Health Care Administration

2013: Established the Biostatistics Research Center

2015: Established the Graduate Institute of Data Science

2015: Established the Big Data Research Center

2015: Established the TMU Big Data Alliance and Resource-sharing Platform

2015: Began organizing the quarterly Biotechnology Data Trend Forum in cooperation with KPMG Global's Office in Taipei

2016: Established the Executive Master Program of Business Administration in Biotechnology

2016: Established the Post-Baccalaureate Program in Health Care Administration and Data Science

2018: Signed MoU with the Rogosin Institute, an affiliate of Cornell University, for further course collaborations

2019: Signed MoU with the University of Nottingham, UK

2019: Established the International Ph.D. Program in Biotech and Healthcare Management



Founded in 2016

COLLEGE OF NUTRITION

Based on the concept of "Life counts on health, and health counts on nutrition," the School of Nutrition and Health Sciences, founded in 1979, is the first school of the College of Nutrition, with master's program, professional master's program, and doctoral programs established in 1995, 2000, and 2002, respectively. The school provides trainings in areas of therapeutic nutrition, nutrition research, food service management, and quantity food production, planning, and management, aiming to strengthen public health promotion. The school has over 3,300 outstanding alumni in the nutrition-related field, and has the highest passing rate for the registered dietitians in the nation.

promote public health on the issue of weight management and metabolism, we established Taiwan's first master's program in the Graduate Institute of Metabolism and Obesity Sciences in 2017. By integrating research and practice in translational medicine from bench to bedside, the program aims to cultivate interdisciplinary specialists in community prevention and clinical intervention of obesity and metabolic diseases.

In addition to teaching, the college also dedicated efforts to conduct research works and fulfill social responsibility. The Research Centers of Nutritional Medicine and Geriatric Nutrition were established in 2016 and 2017 respectively to integrate research, development, and application in functional foods and nutritional care for the elderly by combining clinical and basic research.

With increasing emphasis on food safety and need for food safety experts, we established Taiwan's first master's and bachelor's programs in food safety in 2016 and 2017 respectively. These programs aim to enable students with capabilities of risk assessment, crisis management, research and practical skills, problem discovering and solving, and global perspectives. The goal is to foster more outstanding professionals in this field so that they can provide the knowledge in food safety to the society. As an approach towards preventive medicine, and to

Being the first College of Nutrition in Taiwan, we offer extensive resources in bridging the students with the global community. We provide a number of international activities including exchange student programs, international internships, summer school programs, and dual-degree programs in partnership with world-renowned universities. Furthermore, we continue to expand the MOOCs curriculum as well as promote academia-industrial cooperation. The College of Nutrition strives to become the home to the best professionals in nutrition and food safety in Asia.

Departments

School of Nutrition and Health Sciences

Bachelor's, Master's, Professional Master's, Ph.D. programs

School of Food Safety

Bachelor's Program
Master's Program

Graduate Institute of Metabolism and Obesity Sciences

Master's Program

Research Center of Nutritional Medicine

Research Center of Geriatric Nutrition

Research Center of Food Safety Inspection and Function Development

Honors and Specialties

Established the School of Nutrition and Health Science in 1979

Teikyo-Harvard Program – Launched Harvard Special Session at Teikyo University in Japan since 2015

Cherry Blossom Technology Project- Launched the training program in cooperation with Tohoku University in Japan since 2016

Established the nation's first College of Nutrition in 2016

Established the nation's first Master's Program in Food Safety in 2016

Established Research Center of Nutritional Medicine in 2016

Established the Research Center of Geriatric Nutrition in 2017

Established the nation's first Bachelor's Program in School of Food Safety in 2017

Established the nation's first Master's Program in Graduate Institute of Metabolism and Obesity Sciences in 2017

Established the Research Center of Food Safety Inspection and Function Development in 2020



Departments

Interdisciplinary Learning Center

Establish interdisciplinary course and program
Develop interdisciplinary teaching alliance

Innovation Entrepreneurship Education Center

Cultivate students creativity and innovation ability
Establish and strengthen the innovation and entrepreneurship program

Digital Initiative Center

Set up credit bank and learning guide
Cultivate students' lifelong continuous learning

Founded in 2017

COLLEGE OF INTERDISCIPLINARY STUDIES

The College of Interdisciplinary Studies (CIS), established in 2017, is one of the first interdisciplinary studies programs in Taiwan that has been institutionalized in universities.

The college serves as a bridge connecting and coordinating between general education, professional and clinical studies. Our mission is to help students develop problem-solving ability sets and break the boundaries to reach academic and professional goals. All programs in CIS provide students with the opportunities to obtain five key skill sets: 1. problem identification skills 2. innovation, entrepreneurship, and execution skills 3. teamwork skills and the ability to communicate and cooperate with others 4. global adaptation ability 5. lifelong learning skills.

There are three centers in the CIS: Interdisciplinary Learning Center, Innovation Entrepreneurship Education Center and Digital Initiative Center. We are located in the center of the TMU campus in the Auditorium Building, with a 500-ping space created for students to focus on interdisciplinary learning and maker education.

The Interdisciplinary Learning Center aims to promote interdisciplinary education and develop advanced programs. The center also leads a faculty-based learning community to increase cooperation among different colleges or areas of studies. There have been 18 interdisciplinary mini programs offered by the center,

including Mini-program in Artificial Intelligence, Design Thinking, Immersive Technology and Global Impact & Outreach. The center is planning more learning programs to help faculty and students further develop interdisciplinary perspectives.

The Innovation and Entrepreneurship Education Center provides students with resources and supports needed for innovation and entrepreneurship by gathering related resources from events and courses. Our goal is to expose students to experiences in entrepreneurship practice from innovative thinking to entrepreneurial activities. We also work to create an entrepreneurial environment and cultivate entrepreneurial spirit that encourages students to try and not be afraid of failures.

The Digital Initiative Center carries forward the MOOCs (Mass Open Online Courses) and introduces excellent curriculums to enhance global learning experiences and reach local internalization. The center initiates a digital self-learning fund and work with digital learning platform Coursera to launch the "Coursera for Campus" program, making TMU the first university in East Asia to launch such a program.

The program adopts an annuity system that offers each student with subsidies of certificate fees and recognizes up to 8 course credits, encouraging students to learn from the world's best MOOCs and cultivate a culture of life-long learning. In addition, the center proactively promotes innovative technology in teaching through VR installations and experience activities.

CIS offers well-equipped facilities and dedicates its efforts to promote interdisciplinary studies, aiming to cultivate biomedical talent for better development of Taiwan's health ecosystem.

TMU HEALTHCARE SYSTEM

Taipei Medical University



The Taipei Medical University Healthcare System includes the world-class Taipei Medical University and six affiliated hospitals:

Taipei Medical University Hospital

Wanfang Medical Center

Shuang Ho Hospital

TMU Taipei Cancer Center

TMU Taipei Neuroscience Institute

Taipei Medical University - Hsin Kuo Min Hospital

A combined capacity of more than 3000 beds puts us among the largest healthcare systems in metropolitan Taipei. We deliver comprehensive and coordinated services by integrating primary and specialty care with research and education.

Founded in 1976

TAIPEI MEDICAL UNIVERSITY HOSPITAL

Contact Information

No. 252, Wuxing St., Xinyi Dist., Taipei City
11031, Taiwan

Tel +886-2-2737-2181 ext. 8424,8428,8429

Email ihc@h.tmu.edu.tw

english.tmu.org.tw

Taipei Medical University Hospital (TMUH), the first affiliated hospital of Taipei Medical University (TMU), was founded in 1976 and has built up the basis between clinical service and medical research education.

Located near TMU campus, the university and the hospital unite as one. TMUH as a university-affiliated hospital upholds the core value and development focus of "Service, Education, and Research."

Continuing the core values of "patient-centered, staff-oriented, and pride in TMUH," the hospital has actively promoted holistic healthcare in recent years, advocating for "five wholeness" in medical care. Starting from the perspectives of the "whole person," "whole family," "whole team," "whole journey," and "whole community," it expands the scope of medical care from disease treatment to encompass mental well-being, providing patient-centered healthcare and aiming to become the strongest support for patients.

In line with TMU's commitment to sustainable operation, TMUH is dedicated to achieving sustainable development goals, deepening its focus on health, well-being, and quality education. In 2022, it was honored with three awards at the Asia-Pacific Sustainability Action Awards, and in 2023, it became one of the first healthcare institutions to sign the Hospital Sustainable Development Initiative with the Taiwan Institute for Sustainable Energy(TAISE).

As it strives for excellence, TMUH continues to develop its medical specialties, enhance teaching and education, and deepen research and innovation. It aims to become an internationally renowned university medical center, building a trusted hospital through high-quality medical care and establishing a medical brand of excellence that fills its staff with pride.



Founded in 1997

TAIPEI MUNICIPAL WANFANG HOSPITAL

Contact Information

No.111, Sec. 3, Xinglong Rd., Wenshan Dist.,
Taipei City 11696, Taiwan

Tel +886-2-2930-7930 ext. 7766

Fax +886-2-8662-1135

Email ims@w.tmu.edu.tw

www.taiwanhealthcare.com

Wanfang Hospital was opened on February 15, 1997, entrusted by the Taipei Municipal Government to Taipei Medical University to operate, as the second affiliated hospital of Taipei Medical University, combined with the basis of two-way communication between clinical services and teaching and research of Taipei Medical University and all colleagues, Wanfang Hospital passed the medical policy committee in 2004 to evaluate the medical center-level hospital.

"Progress" never ends, Wanfang Hospital continues to improve the health and quality of the people, constantly makes breakthroughs in medical treatment, service, teaching, research and other aspects, and cooperates with medical institutions around the world to expand the depth and breadth of Taiwan's medical profession and become a world-class university hospital.



Founded in 2008

TMU SHUANG HO HOSPITAL

Contact Information

No.291, Zhongzheng Rd., Zhonghe Dist.,
New Taipei City 23561, Taiwan

Tel +886-2-2249-0088

ext. 8809, 8803, 8804, 8682

Email ims@tmu.edu.tw

www.shh.org.tw

Opened in 2008, Shuang Ho Hospital offers outpatient, inpatient and emergency services for more than 40 different specialties and sub-specialties. The hospital, with a capacity of 1,578 beds, has received JCI accreditation in 2009 and again in 2012, 2015 and 2018.

It is also certified with ISO 9001, ISO 14001, and ISO 27001 standards and has the advanced capability to perform PET-CT, 3T-MRI, gamma knife radiosurgery, tomotherapy, etc., as well as being equipped with da Vinci Surgical System, Robotic Stereotactic Assistance (ROSA) and Magnetic Resonance-guided Focused Ultrasound (MRgFUS) for complex operations.

The "Robotic Stereotactic Assistance" (ROSA) is a robotic and surgical navigation system designed to aid surgeon in performing minimally invasive surgery in thoracolumbar spine. It is tailored specifically to accommodate surgical procedure with the help of robotic arm and navigational guidance to support the operation.

The "Magnetic Resonance-Guided Focused Ultrasound" (MRgFUS) allows the physician to treat any condition non-invasively. The apparatus will involve no surgery and result in no scarring or impact on the surrounding healthy tissues.

This medical institution is committed to combine all the best teams from different disciplines to provide the public with the most complete medical system for acute and critical conditions. It is also a training hospital for senior ambulance technicians in New Taipei City and the city's Emergency Operations Center (EOC) to coordinate a network of hospitals as response in time of medical disaster.

Shuang Ho Hospital, being determined, has set out on a mission to wholeheartedly care, serve and commit to patients with innovation and high-quality standard.



Founded in 2013

TMU TAIPEI CANCER CENTER

Contact Information

No.250, Wuxing St., Xinyi Dist.,
Taipei City 11031, Taiwan

Tel +886-2-6636-9060

Fax +886-2-6639-7181

Email itcc@h.tmu.edu.tw

www.cancertaipei.tw

TMU Taipei Cancer Center is the first cancer center in Taiwan that provides comprehensive services from cancer prevention, screening, diagnosis, treatment, to long-term follow-up and consultation.

Our multidisciplinary care team, led by cancer physicians including nurses, pharmacists, nutritionists, social workers, psychologists, and other medical professionals, provides personalized care and treatment plans. With the assistance of the Molecular Tumor Board, the clinicians develop individualized cancer treatments and precision medicine for each patient.

Through the expertise of the internationally recognized Taipei Medical University Translation Research Center, we combine newly developed treatment plans with current therapies to maximize the outcomes. In addition, the Taipei Cancer Center provides new and effective therapies for difficult-to-treat and late-stage cancer patients.

The TMU Proton Center, operated by the end of July 2022, will provide fourth generation proton therapy with pencil-beam technology and cone beam CT navigation. This new radiotherapy technology will greatly enhance the quality of medical care and outcomes for patients with cancer.



Founded in 2017

TMU TAIPEI NEUROSCIENCE INSTITUTE

Taipei Neuroscience Institute (TNI) was established in 2017 after the integration of all the departments of neurosurgery, neurology, neuroradiology, rehabilitation and psychiatry of the university's three affiliated hospitals in Taipei. The integration aims to promote our practice standards in clinical neuroscience, improve our quality of clinical training and education, and enhance our research collaboration between clinicians and basic neuroscientists.

Built upon its solid foundation, the TMU-TNI has 15 departments, including Neuro-oncology, Radiosurgery, Cerebrovascular Disease, Neurorehabilitation, Degenerative Disease, Neuropsychology and Cognitive Function, Spinal Disorder, Peripheral Nervous Disorder, Pain Disorder, Pediatric Neurology, Neurotraumatology and Intensive Care, Dizziness, Sleep Disorders and Headache, Epilepsy, Neuroimmunology, and Neuroradiology. We place emphasis on interdisciplinary discussions to provide best medical service to patients.

In terms of integration and research, the TMU-TNI collaborates closely with the TMU. Clinicians and scientists work on research projects together and carry out trials with other universities or research institutes in Taiwan and abroad. We promote collaboration between the university and the medical industry, and encourage our teams to host neuroscience seminars and large conferences. Furthermore, we establish a neuroscience research institute in TMU and provide training courses for new students, putting great efforts into nurturing clinical and research talent.

Established with dedication to medical care, the TMU-TNI looks into the future with a desire to further improve neuroscience at home and abroad. Not only do we aim to become a vanguard medical center recognized worldwide, we are also devoted to providing the highest-level health care to the people of Taiwan and neighboring countries.

Contact Information

No. 291, Zhongzheng Rd., Zhonghe Dist.,
New Taipei City 23561, Taiwan

Tel +886-2-2249-0088 ext. 2291

Email tmu.tni@tmu.edu.tw



Founded in 2019

TMU HSIN KUO MIN HOSPITAL

Contact Information

No. 152, Fuxing Rd., Zhongli Dist., Taoyuan City
320, Taiwan

Tel +886-3-4225180

Tel +886-3-4228925

Email skmh@skmh.tmu.edu.tw

Hsin Kuo Min Hospital is the fourth affiliated hospital of Taipei Medical University, which is aiming to become one of the world's top medical schools.

Hsin Kuo Min Hospital has a strong and professional medical team of high quality. Orthopedic surgeons specialize in prevention, diagnosis and treatment of bones, joints, ligaments, tendons, muscles and nerves disorders. Physicians in the department have expertise in all areas of orthopedics, including minimally invasive surgery, spine disorders, joint reconstruction and revision, foot and ankle injuries, hand surgery, and trauma. The Department of Rehabilitation Medicine provides physical therapy, occupational therapy, and other services. We provide rehabilitation services for patients with various musculoskeletal disorders, injuries, or diseases.

To satisfy people's needs, the hospital set up a general service center that includes clinics of nephrology, urology, neurology, immunology and rheumatology, hepatobiliary gastroenterology, and dermatology specialties. There is also a comprehensive hemodialysis center that allows hemodialysis patients to receive high-quality vascular access care and treatment.

Hsin Kuo Min Hospital continually upgrades and improves the quality of medical management system, and provides the best quality and service to the people and local community.



INTERNATIONAL MEDICAL

Taipei Medical University

HEALTH CARE BEYONDBORDERS

The first university to establish medical teams towards African countries in Taiwan.

Taiwan, as a member of the international civil society, cannot be excluded. In order to represent the humanitarian spirit and align with the National diplomatic policy, TMU has been dedicated to humanitarian aid by allocating resources from all the hospitals. Since 2003, TMU has set up a student service team and traveled to Cambodia, Malawi, Eswatini, Nepal and other countries to provide volunteer medical and health care services. In 2009, the first medical team was dispatched to the Kingdom of Eswatini in Africa to provide medical services, professional training and public health prevention. Through professional medical cooperation to foster diplomatic relations and to establish partnerships with other countries. By the end of 2022, TMU has sent more than 300 experts to 12 countries to execute health related projects, with ongoing cooperation in countries such as Eswatini, Marshall Islands, and Somaliland.

The Kingdom of Eswatini

We have devoted ourselves in the Kingdom of Eswatini for 15 years, and we offer diversified and comprehensive medical services to strengthen the medical resources and functions of local community. Our efforts have been recognized by numerous international and diplomatic contribution awards, and in 2021, we were awarded the National Quality Silver Award.

The healthcare collaboration includes :

- (1) Medical services with fundamental humane care
- (2) Internship program and national examination system for doctors after their return to the Eswatini.
- (3) To conduct public health research and prevention in communities throughout the country
- (4) Enhancement of early cancer diagnosis and integrated care system
- (5) Regular royal health check to reinforce the friendship between two countries

The Republic of Marshall Islands

"We have many diplomatic countries, but Taiwan is the only country that helps us to train local medical

personal," said by the Minister of Health of Marshall Island. It is evidence that over the past 10 years, TMU has spared great efforts in nurturing medical professionals in the island. The first physician completed his residency training in Taiwan and return in 2023 to establish an endoscopy team in Marshall island. In addition, TMU has reached every atoll to do community screening and health education, working with local NGOs to prevent and treat the national disease of diabetes in the country.

The healthcare collaboration includes :

- (1) Medical services with fundamental humane care
- (2) Internship and residency training for Marshall island's medical students in Taiwan
- (3) Community-based chronic disease screening and health education
- (4) Nutrition education for local students

The Republic of Somaliland

In 2022, the University expanded into East Africa, establishing medical and health partnership with the Republic of Somaliland as a second long-stay medical mission.

We provide medical services as professional training and equipment donations at the Hargeisa Group Hospital in the capital of Somaliland.

Student Volunteer Team

Since 2007, teachers and students in the School of Dentistry have formed the "South India Overseas Medical Service" team to provide free dental care service in South India. The service is mainly offered to Tibetan communities, Tibetan Buddhist monasteries, service centers for the disabled, and primary and secondary schools in remote areas. The service team is dedicated to promoting oral disease prevention.

The team works with the local communities and set up temporary dental clinics in hospitals and clinics that didn't have ones. With portable dental treatment boxes and materials, the team managed to provide mid to long-term dental cares in the most difficult environment.

After ten years of dedicated service in South India, the team moved to Nepal in 2017 and cooperated with "METTA Volunteers" group to start providing service at local primary and secondary schools, Tibetan monasteries, and Tibetan primary and secondary schools in Nepal. Since then, the team has won three awards in the "Regional Peace Volunteer Group Excellence Competition" by the "National Youth Commission of the Executive Yuan.



LEAD REGIONALLY, CONNECT GLOBALLY



Lead regionally, connect globally

TMU engages with a wide range of academic institutions and business partners to respond to healthcare needs both at home and worldwide. Our extensive professional network benefits the identification of strategic solutions to our common problems. Our high-caliber teaching and research staff actively participate in diverse international activities that help the university develop and deliver top-tier research innovations and educational programs.

Strategic global partnerships

We promote student and staff exchanges for educational collaborations and research through our partnerships worldwide. Our strategic partnerships with over 230 institutions such as Case Western Reserve University, Hokkaido University, Imperial College London, Johns Hopkins University, University of Lille, and University of Southern California have benefited both our academics and students through exchange and training initiatives and research collaboration.

Active outbound mobility

Each year, more than 400 of our students take part in learning activities overseas. They not only explore studying and living abroad, but also broaden their academic horizons and diversify their cultural exposure in locations ranging from Europe to sub-Saharan Africa. Some engage in clinical observation at teaching hospitals and care centers abroad to understand different healthcare systems; others serve through volunteer service, conduct thesis research, or work with scientists at partner institutions to enhance their skills and knowledge.

Growing inbound students

We have welcomed students from more than forty nations to join the TMU family. Our ten colleges and affiliated hospitals regularly host international students for short-term programs, medical electives, and research or laboratory internships. These visiting students work with our faculty members, researchers, and clinical professionals to reinforce their learning in different contexts. Supportive local staff and students help short-term and student visitors gain valuable learning experience while living in Taipei, the

culturally diverse capital.

International dual degree programs

In addition to short-term overseas exchanges, TMU students are encouraged to expand their academic experience at our partner institutions through collaborative education programs. As of June 2023, TMU offers 33 dual degree programs with partner institutions worldwide include Biomedical Materials, Tissue Engineering, Bioinformatics, Nutrition and Health Science, Pharmacy, Dentistry, Respiratory Therapy, Nanomedicine, and Public Health. Our students benefit from innovative curriculum design as well as from studying and living in a different country. Such in-depth, cross-cultural exposure enhances their scholarly development and often opens doors to international opportunities in their future careers.

Focused research collaborations

Research collaboration is another key area of TMU's internationalization portfolio. Our clinical professionals and scientists are encouraged to work with their peers around the globe to create synergy in biomedical research. To support this, TMU is committed to working with likeminded institutions to establish mechanism for international research collaborations with a focus on staff mobility and joint research.

We have formed several academic alliances to facilitate dialogues among researchers to identify potential joint research activities, including training of young scientists, exchange and visits of researchers, sharing of research resources, and execution of joint research projects. Many of our faculty members are experienced in conducting international research projects, leading to TMU's track record in winning NSTC (National Science and Technology Council) grant for projects that support Taiwan's development agenda. In addition to public funding, TMU also set aside financial aid to support international research collaborations, encouraging high-performing academics to continuously facilitate bilateral and multi-lateral exchange of perspectives and expertise to create shared benefits. With a diverse portfolio of symposiums and seminars, networks of academics, and joint research projects, TMU researchers have rapidly expanded their footprint and around one-third of our scientific output has an international connection. Activities as such are expected to grow further in the coming years, and we welcome researchers from around the world to join our exciting journey of innovating biomedical research and healthcare for our communities.

To know more about the TMU experience, visit the University's Website at <https://oge.tmu.edu.tw>

A WELCOMING CAMPUS FOR INTERNATIONAL STUDENTS

International students from more than 49 nations have chosen TMU for its extensive laboratories, research opportunities and all English graduate programs.

The university is a few minutes' walk from Taipei's trendiest entertainment and shopping district; also nearby are the famous hiking trails on Four Beasts Mountain and Elephant Mountain. Reasonable living costs and safe streets make Taipei an ideal destination for students. The excellent public transit system includes a bicycle depot on campus and a subway line that is a few hundred yards away.

Excellent academic offerings

TMU has offered an optimal environment for education, research and personal growth for over 40,000 graduates who provide health care service in Taiwan and overseas.

Praised highly in both international and national evaluations, TMU's programs received top rankings on four primary criteria, including ambitious goals for globalization and development strategy, excellent curriculum for local and international students, and support services for international students' daily lives. Our all-English degree programs and the vast expansion of overseas internships also won highly positive reviews.

Medical services for the global community

Through outreach activities, the TMU community shares its medical and healthcare skills through a wide variety of operations, ranging from permanent medical missions in Eswatini and the Marshall Island to healthcare support to Southeast Asian countries such as Vietnam and Indonesia. TMU students also regularly organize medical service trips to India and underserved communities in Taiwan. In addition, the university supports international graduate students to conduct research in other countries.

Support to international students

TMU is committed to facilitating ease of adjustment for new students with technology-assisted information dissemination and ample resources on campus. The University canteen offers a good selection of food that accommodates our diverse international student and staff. The on-campus copy shop and convenience stores provide a wide range of supplies that cater to students' academic and daily lives. Sports lovers may visit our competition-size swimming pool with a large whirlpool spa, steam rooms and dry saunas, a weight room, table tennis room, and studio for yoga and other physical education classes. Support services for international students include several off-campus dormitories

(shared apartments), free shuttle service between our campuses and local transit stations, a campus counseling center, prayer spaces, and a Muslim prayer room with ablution facilities, as well as well-furnished laboratories with bilingual training on the operation of all high-tech equipment.

Scholarships and other financial aid

An extensive scholarship program assists most foreign students with their costs of studying and living in Taipei. Other programs support international students in attending conferences, participating in competitions and taking internships abroad. Full scholarship details are as follows:

To know more about the TMU experience, follow TMU Outwards on Facebook or visit the University's Website at

www.tmu.edu.tw/english/main.php

E-mail inquiries can be sent to iss@tmu.edu.tw and gps@tmu.edu.tw





**TAIPEI
MEDICAL UNIVERSITY**



Taipei Medical University

ADD : No.250, Wuxing St., Xinyi Dist., Taipei City 11031, Taiwan

TEL : 886-2-27361661

WEBSITE : www.tmu.edu.tw/english



Taipei Medical University Hospital

ADD : No.252, Wuxing St., Xinyi Dist., Taipei City 11031, Taiwan

TEL : 886-2-27372181

WEBSITE : english.tmu.org.tw



Taipei Municipal Wanfang Hospital (Managed by Taipei Medical University)

ADD : No.111, Sec. 3, Xinglong Rd., Wenshan Dist., Taipei City 11696, Taiwan

TEL : 886-2-29307930

WEBSITE : www.wanfang.gov.tw



Taipei Medical University - Shuang Ho Hospital, Ministry of Health and Welfare

ADD : No.291, Zhongzheng Rd., Zhonghe Dist., New Taipei City 23561, Taiwan

TEL : 886-2-22490088

WEBSITE : www.shh.org.tw



TMU, Taipei Cancer Center

ADD : No.250, Wuxing St., Xinyi Dist., Taipei City 11031, Taiwan

TEL : 886-2-66369060

WEBSITE : www.cancertaipei.tw



Taipei Neuroscience Institute

ADD : No. 291, Zhongzheng Rd., Zhonghe Dist., New Taipei City 23561, Taiwan

TEL : 886-2-22490088 Ext 2291



Taipei Medical University - Hsin Kuo Min Hospital

ADD : No. 152, Fuxing Rd., Zhongli Dist., Taoyuan City 320, Taiwan (R.O.C.)

TEL : +886-3-4225180

Fax : +886-3-4228925

Email : skmh@skmh.tmu.edu.tw

General Information

Geography

Population: 23,452,387

Area: 36,192.8155 km²

Language: Mandarin, Taiwanese dialect



Others

- Drives on Right
- International calling code +886
- Electricity 110 volt
- Wall socket shown as picture
- Tap water isn't drinkable, boiled or bottled water is recommended.

Climate

Type:

Tropical monsoon

Raining season:

May – Early June (mold rain)

July – September (typhoon)

December – February (monsoon, in Northern Taiwan including Taipei)

Temperature:

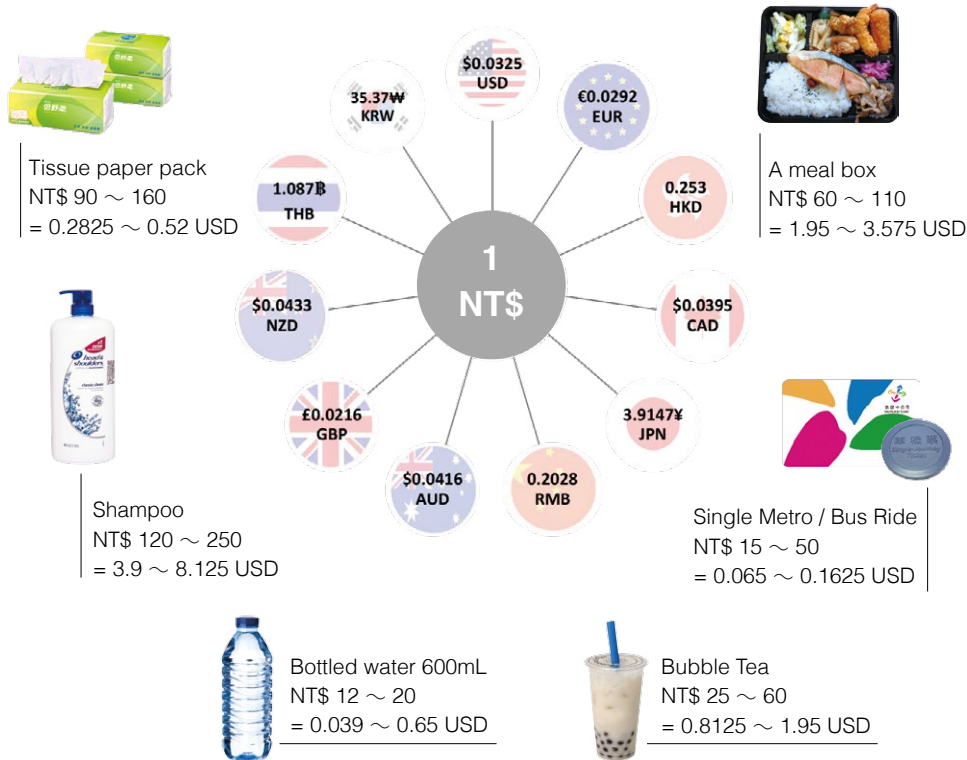
Average Summer

29 – 30°C / 84.2 – 86°F

Average winter

15 – 16°C / 59 – 60.8°F, can drop to 10°C / 50°F

Currency Exchange & Price Estimation of Daily Goods



Application Information for Alien Resident Certificate (ARC)

1. Foreigners holding resident visa or changing to resident visa should go to local immigration service center to apply for alien resident certificates within 15 days counted from the next day of arrival or the next day of receiving resident visa in Taiwan.
2. Application form can be found at <https://www.immigration.gov.tw/public/Data/09216474271.pdf>
More information on ARC application or extension can be found at <http://www.immigration.gov.tw/ct.asp?xitem=1090287&ctNode=30085&mp=2>

How to Get to TMU

Departure	Destination	Transportation	Route
Taiwan Taoyuan International Airport	TMU main campus	1. Taxi	Taxis operating by shifts are located at the west side of the Terminal 1's and Terminal 2's Arrivals Lobby at the Taiwan Taoyuan International Airport. For more information, please refer to https://www.taoyuan-airport.com/english/taxi
		2. Taoyuan Airport Metro → Taipei Metro	Take Taoyuan Airport MRT to Taipei Main Station (A1), and transfer to Taipei Metro Tamsui-Xinyi Line (Red Line) to Taipei 101/World Trade Center station (R03). For more information on Taoyuan Airport MRT, please see https://www.taoyuan-airport.com/english/taoyuan_metro
		2. CitiAir Bus 1960 → TMU free shuttle bus	Take CitiAir Bus 1960 at Terminal 1 or 2 at Taoyuan International Airport, and get off at MRT Taipei City Hall Station / City Hall Bus Station, then take TMU free shuttle bus (Taipei City Hall line). For TMU shuttle bus schedule, please refer to chapter 2 of this handbook.

Postal Services



If you want to send a postcard back home, you have to stick a NT\$13 stamp on the postcard then drop it in the red mailbox on the road.

Postage rates will vary depending on your destination. You can visit post office for further assistance.

Banking

Postal Banking Services

The post office system in Taiwan provides banking services as well. Applicant should present a valid residency permit and passport. Applicants without a valid permit are required to present a "Record of ID Number in the Republic of China."

More information can be inquired at

http://www.post.gov.tw/post/internet/U_english/index.jsp?ID=24030101

Inquiry hotline: 02-2388-9393 and 0800-024-111

Medical Insurance

National Health Insurance

Foreign nationals who are legal residents of Taiwan should enroll in the National Health Insurance program upon living in Taiwan for 6 months of continuous residence in Taiwan. Foreign students can apply to enroll in the program through their school.

Mobile services

Main network service providers in Taiwan include:

- **Chunghwa Telecom** <https://www.cht.com.tw/en/home/cht>
- **Far Eastone** https://www.fetnet.net/cs/Satellite/eCorporate/ecoPD1_1_1
- **Taiwan Mobile** <https://english.taiwanmobile.com/>
- **Asia Pacific Telecom** <http://ir.aptg.com.tw/en/index.htm>
- **T Star** <https://www.tstartel.com/static/twcard/en/index.htm>

Emergency Numbers

Universal Emergency Number	112
*Call when network service is unavailable	
Fire or Emergency Aid	119
Police Office	110
Phone Number Lookup	104

Woman Association Taxi

Woman Association Taxi	02-2766-2222
Fanya Taxi	02-8501-1122
Taiwan Taxi	55688
M Taxi	55178

MOCs courses available now, instructed by TMU and its IOOI partners:

placed on Aug. 15 2023

Num.	University	Course list	Platform	Applicable to	Link
1	Taipei Medical University	Clinical Pharmacokinetics: Dosing and Monitoring	FutureLearn	Undergraduate student	https://www.futurelearn.com/courses/nutrition-disease-prevention
2	Taipei Medical University	Evidence-Based Medicine in Clinical Pharmacy Practice	FutureLearn	Undergraduate student	https://www.futurelearn.com/courses/eating-while-enjoying-life
3	Taipei Medical University	Pharmacokinetics: Drug Dosing in Renal Disease	FutureLearn	Undergraduate student	https://www.futurelearn.com/courses/nutrition-food-safety
4	Taipei Medical University	Nutrition and Disease Prevention	FutureLearn	Undergraduate student	https://www.futurelearn.com/courses/ai-and-big-data-global-health-improvement
5	Taipei Medical University	Nutrition: Eating to Live Well	FutureLearn	Undergraduate student	https://www.futurelearn.com/courses/consciousness
6	Taipei Medical University	Introduction to Nutrition and Food Safety	FutureLearn	Undergraduate student	https://www.futurelearn.com/courses/artificial-intelligence-in-bioinformatics
7	Taipei Medical University	Food Technology, Health and Safety	FutureLearn	Undergraduate student	https://www.futurelearn.com/courses/sustainable-building-and-energy-efficiency-development/1
8	Taipei Medical University	Nutrition and Age-Related Chronic Diseases	FutureLearn	Undergraduate student	https://www.futurelearn.com/courses/global-action-for-marine-sustainability/1
9	Taipei Medical University	Social Media in Healthcare: Opportunities and Challenges	FutureLearn	Undergraduate student	https://www.futurelearn.com/courses/sustainable-development-in-health-and-ecology
10	Taipei Medical University	Internet of Things for Active Aging	FutureLearn	Undergraduate student	https://www.ewant.org/admin/tool/mooccourse/mnetcourseinfo.php?hostid=9&id=7101
11	Taipei Medical University	AI and Big Data in Global Health Improvement	FutureLearn	Undergraduate student	https://www.ewant.org/admin/tool/mooccourse/mnetcourseinfo.php?hostid=9&id=7064
12	Taipei Medical University	Application of Digital Health Interventions	FutureLearn	Undergraduate student	https://www.ewant.org/admin/tool/mooccourse/mnetcourseinfo.php?hostid=9&id=7100
13	Taipei Medical University	Applications of AI Technology	FutureLearn	Undergraduate student	https://www.futurelearn.com/courses/sustainable-building-and-energy-efficiency-development
14	Taipei Medical University	Sustainable Development in Health and Ecology	FutureLearn	Undergraduate student	https://www.futurelearn.com/courses/global-action-for-marine-sustainability
15	Taipei Medical University	Medical Humanity: Engaging Patients and Communities in Healthcare	FutureLearn	Undergraduate student	https://www.futurelearn.com/courses/shaping-the-future-through-sustainable-development
16	Taipei Medical University	Capacity Building: Core Competencies for Health Promotion	FutureLearn	Undergraduate student	https://www.futurelearn.com/courses/molecular-biology-how-to-detect-pathogens-in-aquaculture
17	Taipei Medical University	The Foundation of Modern Dentistry	FutureLearn	Undergraduate student	https://www.futurelearn.com/courses/introduction-to-ai-applications-in-pulmonary-medicine
18	Taipei Medical University	Pharmacotherapy: Understanding Biotechnology Products	FutureLearn	Graduate student	https://www.futurelearn.com/courses/agriculture-and-nutrition
19	Taipei Medical University	Become a Pharmacy Preceptor	FutureLearn	Graduate student	https://www.futurelearn.com/courses/food-technology-health-and-safety
20	Taipei Medical University	Essentials of Good Pharmacy Practice: The Basics	FutureLearn	Graduate student	https://www.futurelearn.com/courses/nutrition-and-age-related-chronic-diseases
21	Taipei Medical University	Good Pharmacy Practice: Introduction to Medication delivery system	FutureLearn	Graduate student	https://www.futurelearn.com/courses/translational-research
22	Taipei Medical University	Good Pharmacy Practice: Introduction to Clinical Pharmacy Service	FutureLearn	Graduate student	https://www.futurelearn.com/courses/artificial-intelligence-for-healthcare-opportunities-and-challenges
23	Taipei Medical University	Good Pharmacy Practice: Medication Management	FutureLearn	Graduate student	https://www.futurelearn.com/courses/social-media-in-healthcare
24	Taipei Medical University	Good Pharmacy Practice: Pharmaceutical Services	FutureLearn	Graduate student	https://www.futurelearn.com/courses/internet-aging
25	Taipei Medical University	Agriculture and Nutrition	FutureLearn	Graduate student	https://www.futurelearn.com/courses/corporate-sustainability/1
26	Taipei Medical University	Introduction to Translational Research: Connecting Scientists and Medical Doctors	FutureLearn	Graduate student	https://www.futurelearn.com/courses/shape-the-future-that-you-want-a-comprehensive-approach-for-individuals-and-communities/1
27	Taipei Medical University	Artificial Intelligence for Healthcare: Opportunities and Challenges	FutureLearn	Graduate student	https://www.futurelearn.com/courses/artificial-intelligence-technology-application
28	Taipei Medical University	Artificial Intelligence in Bioinformatics	FutureLearn	Graduate student	https://www.futurelearn.com/courses/corporate-sustainability
29	Taipei Medical University	Telemedicine: Tools to Support Growth Disorders in a Post-COVID Era	FutureLearn	Graduate student	https://www.futurelearn.com/courses/medical-humanity
30	Taipei Medical University	Introduction to AI Applications in Pulmonary Medicine	FutureLearn	Graduate student	https://www.futurelearn.com/courses/health-promotion
31	Taipei Medical University	Precision Medicine and Smart Healthcare: The Industrial Applications	FutureLearn	Graduate student	https://www.futurelearn.com/courses/tools-to-support-growth-disorders-through-telemedicine-in-post-covid-era
32	National Taiwan Ocean University	From Taiwan to International, Marine Sustainability Action!	FutureLearn	Undergraduate student	https://www.futurelearn.com/courses/pharmacokinetics-and-dosing-regimen-in-renal-disease
33	National Taiwan Ocean University	SDG 14: Global Action for Marine Conservation	FutureLearn	Undergraduate student	https://www.futurelearn.com/courses/industrial-application-in-precision-medicine-and-smart-healthcare
34	National Taiwan Ocean University	Molecular Biology: How to Detect Pathogens in Aquaculture	FutureLearn	Undergraduate student	https://www.futurelearn.com/courses/the-foundation-of-modern-dentistry
35	National Taipei University of Technology	Sustainable Building and Energy Efficiency Development	FutureLearn	Undergraduate student	https://www.futurelearn.com/courses/principles-of-evidence-based-medicine-in-clinical-pharmacy
36	National Taipei University of Technology	Sustainable Building and Energy Efficiency Development	FutureLearn	Undergraduate student	https://www.futurelearn.com/courses/advanced-good-pharmacy-practice-part2
37	National Taipei University	Corporate Sustainability	FutureLearn	Undergraduate student	https://www.futurelearn.com/courses/clinical-pharmacokinetic
38	National Taipei University	Corporate Sustainability	FutureLearn	Undergraduate student	https://www.futurelearn.com/courses/advanced-good-pharmacy-practice-part1
39	Tzu Chi University	Shape the Future that you want	FutureLearn	Undergraduate student	https://www.futurelearn.com/courses/overview-and-formulation-of-biotechnology-products
40	Tzu Chi University	This is art because I say so.	ewant	Undergraduate student	https://www.futurelearn.com/courses/pharmacy-preceptor
41	Tzu Chi University	Sustainable Development for the water and material resources	ewant	Undergraduate student	https://www.futurelearn.com/courses/good-pharmacy-practice
42	Tzu Chi University	How to get into a Sustainable Living	ewant	Undergraduate student	https://www.futurelearn.com/courses/good-pharmacy-practice-the-moderate
43	Tzu Chi University	Shaping the Future Through Sustainable Development	FutureLearn	Undergraduate student	https://www.futurelearn.com/courses/good-pharmacy-practice-the-moderate-part2

Events Calendar

 <p>January</p> <p>1</p> <p>New Year's Eve/ Chinese New Year</p>	 <p>February</p> <p>2</p> <p>• Taipei Lantern Festival • Yangminshan Flower Season</p>	 <p>March</p> <p>3</p> <p>Yangminshan Flower Season</p>	 <p>April</p> <p>4</p> <p>Baosheng Cultural Festival Starts</p>	 <p>May</p> <p>5</p> <p>Mother's Day</p>	 <p>June</p> <p>6</p> <p>• Dragon Boat Festival • Taipei Film Festival</p>
 <p>July</p> <p>7</p> <p>• Xia-Hai City God Cultural Festival • Taipei Arts Festival</p>	 <p>August</p> <p>8</p> <p>• Father's Day • Taipei Fringe Festival</p>	 <p>September</p> <p>9</p> <p>Confucius Ceremony</p>	 <p>October</p> <p>10</p> <p>• Mid-Autumn Festival • National Day</p>	 <p>November</p> <p>11</p> <p>Beitou Hot Spring Museum Celebration</p>	 <p>December</p> <p>12</p> <p>• Winter Solstice • Christmas Day</p>

Eligibility

Applicants must fulfill the following requirement

1. Undergraduate and graduate students who are currently enrolled at universities outside Taiwan.
2. Be officially nominated by their home institution and pay the tuition fee to their home institution, not to TMU.
3. Complete at least one semester of the home university program before they apply.
4. Have a cumulative grade point average (GPA) of at least 2.75 (on a 4.0 scale) or equivalent.
5. Be proficient in English. Non-native English speakers must have a score of at least TOEFL iBT 79 or IELTS 5.5.

Program Certificate

Information about certificate and credit transfer

TMU issues certificate of completion and transcript to the students who successfully meet the program requirements of TMU-STEP.

The credits taken under TMU-STEP can be transferred to the student's home university. Please consult your home university

about how to apply for credit transfer.

Housing



Please visit the website of Formosa 101 for further information:
[Formosa 101](#)

**For more information,
please contact the Global
Partnerships Section:**

gps@tmu.edu.tw